

For Research Use Only

RPP25L Polyclonal antibody, PBS Only

Catalog Number: 33447-1-PBS



Basic Information

Catalog Number:

33447-1-PBS

Size:

100ug, Concentration: 1 mg/ml by Nanodrop;

Source:

Rabbit

Isotype:

IgG

Immunogen Catalog Number:

AG37795

GenBank Accession Number:

BC032136

GeneID (NCBI):

138716

UNIPROT ID:

Q8N5L8

Full Name:

chromosome 9 open reading frame 23

Observed MW:

17-19 kDa

Purification Method:

Antigen affinity Purification

Applications

Tested Applications:

WB, Indirect ELISA

Species Specificity:

human

Background Information

RPP25L (Ribonuclease P protein subunit p25-like protein), also known as C9orf23. RPP25L is a subunit of RNase P complex, which is mainly involved in the processing of tRNA precursor, and is responsible for cutting off the 5' leading sequence of tRNA precursor to generate mature tRNA. In addition, RPP25L may also participate in other RNA metabolism processes, such as the processing of rRNA.

Storage

Storage:

Store at -80°C.

Storage Buffer:

PBS only, pH7.3

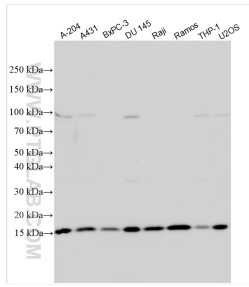
For technical support and original validation data for this product please contact:

T: 1 (888) 4PTGLAB (1-888-478-4522) (toll free in USA), or 1(312) 455-8498 (outside USA)

E: proteintech@ptglab.com
W: ptglab.com

This product is exclusively available under Proteintech Group brand and is not available to purchase from any other manufacturer.

Selected Validation Data



Various lysates were subjected to SDS PAGE followed by western blot with 33447-1-AP (RPP25L antibody) at dilution of 1:2000 incubated at room temperature for 1.5 hours. This data was developed using the same antibody clone with 33447-1-PBS in a different storage buffer formulation.