

For Research Use Only

# SCAI Polyclonal antibody, PBS Only

Catalog Number: 33449-1-PBS



## Basic Information

<b>Catalog Number:</b> 33449-1-PBS	<b>GenBank Accession Number:</b> NM_001144877.2	<b>Purification Method:</b> Antigen affinity Purification
<b>Size:</b> 100ug , Concentration: 1 mg/ml by Nanodrop;	<b>GeneID (NCBI):</b> 286205	
<b>Source:</b> Rabbit	<b>UNIPROT ID:</b> Q8N9R8	
<b>Isotype:</b> IgG	<b>Full Name:</b> chromosome 9 open reading frame 126	
<b>Immunogen Catalog Number:</b> AG38169	<b>Calculated MW:</b> 70kDa 606aa	
	<b>Observed MW:</b> 60 kDa	

## Applications

**Tested Applications:**  
WB, Indirect ELISA

**Species Specificity:**  
human, mouse, rat

## Background Information

SCAI (suppressor of cancer cell invasion) is a conserved protein that regulates invasive cell migration through three-dimensional matrices. SCAI acts on the RhoA-Dia1 signal transduction pathway and localizes in the nucleus, where it binds and inhibits the myocardin-related transcription factor MAL by forming a ternary complex with serum response factor (SRF). Genome-wide expression analysis surprisingly reveals that one of the strongest upregulated genes after suppression of SCAI is beta1-integrin. Decreased levels of SCAI are tightly correlated with increased invasive cell migration, and SCAI is downregulated in several human tumours. Functional analysis of the beta1-integrin gene strongly argues that SCAI is a novel transcriptional cofactor that controls gene expression downstream of Dia1 to dictate changes in cell invasive behaviour (PMID: 19350017).

## Storage

**Storage:**  
Store at -80°C.

**Storage Buffer:**  
PBS only, pH7.3

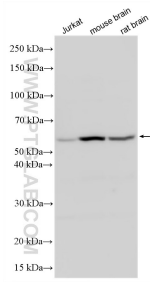
For technical support and original validation data for this product please contact:

T: 1 (888) 4PTGLAB (1-888-478-4522) (toll free in USA), or 1(312) 455-8498 (outside USA)

E: [proteintech@ptglab.com](mailto:proteintech@ptglab.com)  
W: [ptglab.com](http://ptglab.com)

**This product is exclusively available under Proteintech Group brand and is not available to purchase from any other manufacturer.**

## Selected Validation Data



Various lysates were subjected to SDS PAGE followed by western blot with 33449-1-AP (SCAI antibody) at dilution of 1:4000 incubated at room temperature for 1.5 hours. This data was developed using the same antibody clone with 33449-1-PBS in a different storage buffer formulation.