

For Research Use Only

# IQCG Polyclonal antibody, PBS Only

Catalog Number: 33459-1-PBS



## Basic Information

<b>Catalog Number:</b> 33459-1-PBS	<b>GenBank Accession Number:</b> BC004816	<b>Purification Method:</b> Antigen affinity Purification
<b>Size:</b> 100ug , Concentration: 1 mg/ml by Nanodrop;	<b>GeneID (NCBI):</b> 84223	
<b>Source:</b> Rabbit	<b>UNIPROT ID:</b> Q9H095	
<b>Isotype:</b> IgG	<b>Full Name:</b> IQ motif containing G	
<b>Immunogen Catalog Number:</b> AG37506	<b>Calculated MW:</b> 51 kDa	
	<b>Observed MW:</b> 50 kDa	

## Applications

**Tested Applications:**  
WB, Indirect ELISA

**Species Specificity:**  
human, mouse

## Background Information

Human IQ motif containing G (IQCG) gene was first reported to be involved in the chromosome translocation in a case of acute T-lymphoid/myeloid leukemia. The expression of Iqcg is prominently enriched in the testis of mice and reveals an ordered expression pattern during spermatogenesis. Iqcg knockout (KO) mice are sterile, due to the severe malformation and total immobility of their spermatozoa. The axoneme in the KO sperm flagellum is disorganized and hardly any typical normal "9+2" pattern, composed of two central microtubules surrounded by nine microtubular doublets, could be found in the KO spermatids. However, the cilia structures in the trachea and oviduct, as well as histological appearances of other major tissues, remain unaffected in the KO mice, suggesting Iqcg's specific role in spermiogenesis (PMID: 24849454).

## Storage

**Storage:**  
Store at -80°C.

**Storage Buffer:**  
PBS only, pH7.3

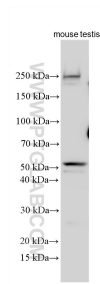
For technical support and original validation data for this product please contact:

T: 1 (888) 4PTGLAB (1-888-478-4522) (toll free in USA), or 1(312) 455-8498 (outside USA)

E: [proteintech@ptglab.com](mailto:proteintech@ptglab.com)  
W: [ptglab.com](http://ptglab.com)

**This product is exclusively available under Proteintech Group brand and is not available to purchase from any other manufacturer.**

## Selected Validation Data



Various lysates were subjected to SDS PAGE followed by western blot with 33459-1-AP (IQCG antibody) at dilution of 1:2000 incubated at room temperature for 1.5 hours. This data was developed using the same antibody clone with 33459-1-PBS in a different storage buffer formulation.