

For Research Use Only

# POLE2 Polyclonal antibody

Catalog Number: 33482-1-AP



## Basic Information

<b>Catalog Number:</b> 33482-1-AP	<b>GenBank Accession Number:</b> BC126218	<b>Purification Method:</b> Antigen affinity Purification
<b>Size:</b> 150ul , Concentration: 520 ug/ml by Nanodrop;	<b>GeneID (NCBI):</b> 5427	<b>Recommended Dilutions:</b> WB: 1:1000-1:8000 IF/ICC: 1:50-1:500
<b>Source:</b> Rabbit	<b>UNIPROT ID:</b> P56282	
<b>Isotype:</b> IgG	<b>Full Name:</b> polymerase (DNA directed), epsilon 2 (p59 subunit)	
<b>Immunogen Catalog Number:</b> AG38070	<b>Calculated MW:</b> 527 aa, 60 kDa	
	<b>Observed MW:</b> 60 kDa	

## Applications

<b>Tested Applications:</b> WB, IF/ICC, ELISA	<b>Positive Controls:</b> WB : HeLa cells, MCF-7 cells, MDA-MB-231 cells IF/ICC : A431 cells,
<b>Species Specificity:</b> human	

## Background Information

DNA polymerase epsilon subunit 2 (POLE2) is involved in cellular functions such as DNA replication, repair, and cell cycle control, as well as in the array-based proliferative signatures (PMID: 9745046; 12620412). Knockdown of POLE2 could suppress esophageal squamous cell carcinoma development through regulating cell proliferation, apoptosis, and migration (PMID: 32831648). POLE2 can also regulate the development of oral squamous cell carcinoma by inhibiting the PI3K/AKT signaling pathway (PMID: 38079056).

## Storage

**Storage:**  
Store at -20°C. Stable for one year after shipment.  
**Storage Buffer:**  
PBS with 0.02% sodium azide and 50% glycerol, pH7.3  
Aliquoting is unnecessary for -20°C storage

\*\*\* 20ul sizes contain 0.1% BSA

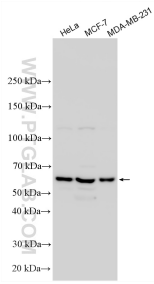
For technical support and original validation data for this product please contact:

T: 1 (888) 4PTGLAB (1-888-478-4522) (toll free in USA), or 1(312) 455-8498 (outside USA)

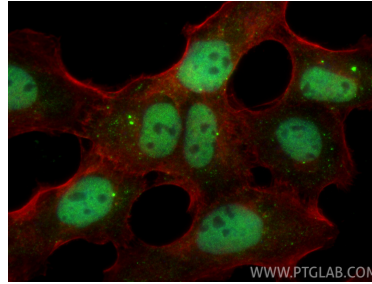
E: [proteintech@ptglab.com](mailto:proteintech@ptglab.com)  
W: [ptglab.com](http://ptglab.com)

This product is exclusively available under Proteintech Group brand and is not available to purchase from any other manufacturer.

## Selected Validation Data



Various lysates were subjected to SDS PAGE followed by western blot with 33482-1-AP (POLE2 antibody) at dilution of 1:4000 incubated at room temperature for 1.5 hours.



Immunofluorescent analysis of (4% PFA) fixed A431 cells using POLE2 antibody (33482-1-AP) at dilution of 1:200 and CoraLite®488-Conjugated Goat Anti-Rabbit IgG(H+L) (SA00013-2), CL594-phalloidin (red).