

For Research Use Only

# POLE2 Polyclonal antibody, PBS Only

Catalog Number: 33482-1-PBS



## Basic Information

**Catalog Number:**

33482-1-PBS

**Size:**

100ug, Concentration: 1 mg/ml by Nanodrop;

**Source:**

Rabbit

**Isotype:**

IgG

**Immunogen Catalog Number:**

AG38070

**GenBank Accession Number:**

BC126218

**GeneID (NCBI):**

5427

**UNIPROT ID:**

P56282

**Full Name:**

polymerase (DNA directed), epsilon 2 (p59 subunit)

**Calculated MW:**

527 aa, 60 kDa

**Observed MW:**

60 kDa

**Purification Method:**

Antigen affinity Purification

## Applications

**Tested Applications:**

WB, IF/ICC, Indirect ELISA

**Species Specificity:**

human

## Background Information

DNA polymerase epsilon subunit 2 (POLE2) is involved in cellular functions such as DNA replication, repair, and cell cycle control, as well as in the array-based proliferative signatures (PMID: 9745046; 12620412). Knockdown of POLE2 could suppress esophageal squamous cell carcinoma development through regulating cell proliferation, apoptosis, and migration (PMID: 32831648). POLE2 can also regulate the development of oral squamous cell carcinoma by inhibiting the PI3K/AKT signaling pathway (PMID: 38079056).

## Storage

**Storage:**

Store at -80°C.

**Storage Buffer:**

PBS only, pH7.3

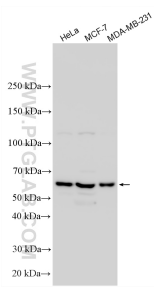
For technical support and original validation data for this product please contact:

T: 1 (888) 4PTGLAB (1-888-478-4522) (toll free in USA), or 1(312) 455-8498 (outside USA)

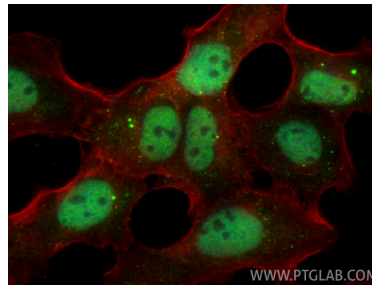
E: [proteintech@ptglab.com](mailto:proteintech@ptglab.com)  
W: [ptglab.com](http://ptglab.com)

**This product is exclusively available under Proteintech Group brand and is not available to purchase from any other manufacturer.**

## Selected Validation Data



Various lysates were subjected to SDS PAGE followed by western blot with 33482-1-AP (POLE2 antibody) at dilution of 1:4000 incubated at room temperature for 1.5 hours. This data was developed using the same antibody clone with 33482-1-PBS in a different storage buffer formulation.



Immunofluorescent analysis of (4% PFA) fixed A431 cells using POLE2 antibody (33482-1-AP) at dilution of 1:200 and CoraLite@488-Conjugated Goat Anti-Rabbit IgG(H+L) (SA00013-2), CL594-phalloidin (red). This data was developed using the same antibody clone with 33482-1-PBS in a different storage buffer formulation.