

For Research Use Only

# WDSOF1 Polyclonal antibody

Catalog Number: 33483-1-AP



## Basic Information

|   |  |  |
|---|--|--|
| <b>Catalog Number:</b><br>33483-1-AP                          | <b>GenBank Accession Number:</b><br>BC112042               | <b>Purification Method:</b><br>Antigen affinity Purification                                 |
| <b>Size:</b><br>150ul , Concentration: 360 ug/ml by Nanodrop; | <b>GeneID (NCBI):</b><br>25879                             | <b>Recommended Dilutions:</b><br>WB: 1:1000-1:4000<br>IHC: 1:50-1:500<br>IF/ICC: 1:200-1:800 |
| <b>Source:</b><br>Rabbit                                      | <b>UNIPROT ID:</b><br>Q9NV06                               |  |
| <b>Isotype:</b><br>IgG  | <b>Full Name:</b><br>WD repeats and SOF1 domain containing |  |
| <b>Immunogen Catalog Number:</b><br>AG35559                   | <b>Calculated MW:</b><br>597 aa, 67 kDa                    |  |
|   | <b>Observed MW:</b><br>60 kDa                              |  |

## Applications

|  |   |
|--|---|
| <b>Tested Applications:</b><br>WB, IHC, IF/ICC, ELISA  | <b>Positive Controls:</b><br>WB : NIH/3T3 cells,<br>IHC : human ovary tumor tissue,<br>IF/ICC : PC-3 cells, |
| <b>Species Specificity:</b><br>human, mouse, rat   |   |
| <b>Note-IHC: suggested antigen retrieval with TE buffer pH 9.0; (*) Alternatively, antigen retrieval may be performed with citrate buffer pH 6.0</b> |   |

## Background Information

WDSOF1 (WD repeat and SOF1 domain-containing 1, also known as DCAF13) functions as a substrate receptor subunit for the CRL4-DDB1 E3 ubiquitin ligase complex. It contains WD40 repeat clusters and is primarily localized in the nucleolus, where it participates in the processing of 40S ribosomal RNA precursors and the regulation of the estrogen receptor. Recent research has revealed its indispensable role in uterine development: its deficiency leads to the downregulation of estrogen target genes, an increase in H3K9me3 levels, failure of embryo implantation, and complete infertility in female mice. Furthermore, WDSOF1 is located at 8q22.3, a genomic region frequently amplified in tumors. It is highly expressed in various cancers, including liver and breast cancer, and is associated with poor prognosis, positioning it as an oncogenic factor and a potential therapeutic target.

## Storage

**Storage:**  
Store at -20°C. Stable for one year after shipment.  
**Storage Buffer:**  
PBS with 0.02% sodium azide and 50% glycerol, pH7.3  
**Aliquoting is unnecessary for -20°C storage**

\*\*\* 20ul sizes contain 0.1% BSA

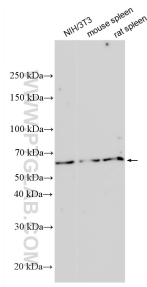
For technical support and original validation data for this product please contact:

T: 1 (888) 4PTGLAB (1-888-478-4522) (toll free in USA), or 1(312) 455-8498 (outside USA)

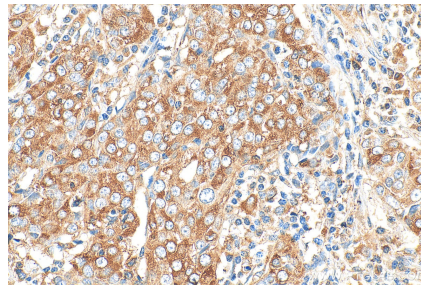
E: proteintech@ptglab.com  
W: ptglab.com

This product is exclusively available under Proteintech Group brand and is not available to purchase from any other manufacturer.

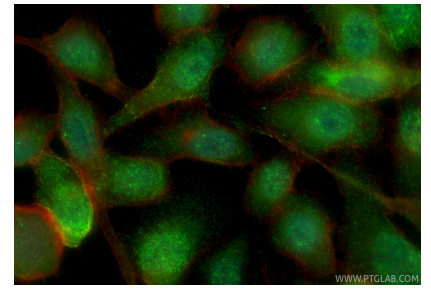
## Selected Validation Data



Various lysates were subjected to SDS PAGE followed by western blot with 33483-1-AP (WDSOF1 antibody) at dilution of 1:2000 incubated at room temperature for 1.5 hours.



Immunohistochemical analysis of paraffin-embedded human ovary tumor tissue slide using 33483-1-AP (WDSOF1 antibody) at dilution of 1:200 (under 40x lens). Heat mediated antigen retrieval with Tris-EDTA buffer (pH 9.0).



Immunofluorescent analysis of (-20°C Ethanol) fixed PC-3 cells using WDSOF1 antibody (33483-1-AP) at dilution of 1:400 and CoraLite@488-Conjugated Goat Anti-Rabbit IgG(H+L) (SA00013-2), CL594-Phalloidin (red).