

For Research Use Only

# ALPI Polyclonal antibody

Catalog Number: 33485-1-AP



## Basic Information

<b>Catalog Number:</b> 33485-1-AP	<b>GenBank Accession Number:</b> BC132678	<b>Purification Method:</b> Antigen affinity Purification
<b>Size:</b> 150ul , Concentration: 460 ug/ml by Nanodrop;	<b>GeneID (NCBI):</b> 248	<b>Recommended Dilutions:</b> WB: 1:1000-1:8000
<b>Source:</b> Rabbit	<b>UNIPROT ID:</b> P09923	
<b>Isotype:</b> IgG	<b>Full Name:</b> alkaline phosphatase, intestinal	
<b>Immunogen Catalog Number:</b> AG36025	<b>Calculated MW:</b> 56 kDa	
	<b>Observed MW:</b> 55 kDa	

## Applications

**Tested Applications:**  
WB, ELISA

**Species Specificity:**  
human, mouse, rat

**Positive Controls:**

WB : rat kidney tissue, mouse kidney tissue, mouse liver tissue, rat liver tissue

## Background Information

ALPI (intestinal alkaline phosphatase) is a brush-border enzyme expressed in the gut that plays a critical role in maintaining intestinal homeostasis. By dephosphorylating pro-inflammatory microbial products, it helps prevent bacterial translocation and systemic inflammation. Dysfunction or deficiency of ALPI is linked to conditions such as increased intestinal permeability, metabolic disorders, and inflammatory diseases, making it a promising therapeutic target for preserving gut health.

## Storage

**Storage:**

Store at -20°C. Stable for one year after shipment.

**Storage Buffer:**

PBS with 0.02% sodium azide and 50% glycerol, pH7.3

Aliquoting is unnecessary for -20°C storage

\*\*\* 20ul sizes contain 0.1% BSA

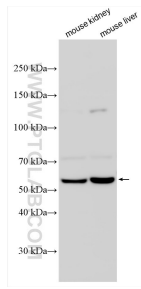
For technical support and original validation data for this product please contact:

T: 1 (888) 4PTGLAB (1-888-478-4522) (toll free in USA), or 1(312) 455-8498 (outside USA)

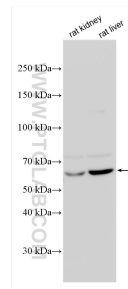
E: [proteintech@ptglab.com](mailto:proteintech@ptglab.com)  
W: [ptglab.com](http://ptglab.com)

This product is exclusively available under Proteintech Group brand and is not available to purchase from any other manufacturer.

## Selected Validation Data



Various lysates were subjected to SDS PAGE followed by western blot with 33485-1-AP (ALPI antibody) at dilution of 1:4000 incubated at room temperature for 1.5 hours.



Various lysates were subjected to SDS PAGE followed by western blot with 33485-1-AP (ALPI antibody) at dilution of 1:4000 incubated at room temperature for 1.5 hours.