

For Research Use Only

# ALPI Polyclonal antibody, PBS Only

Catalog Number: 33485-1-PBS



## Basic Information

**Catalog Number:**

33485-1-PBS

**Size:**

100ug, Concentration: 1 mg/ml by Nanodrop;

**Source:**

Rabbit

**Isotype:**

IgG

**Immunogen Catalog Number:**

AG36025

**GenBank Accession Number:**

BC132678

**GeneID (NCBI):**

248

**UNIPROT ID:**

P09923

**Full Name:**

alkaline phosphatase, intestinal

**Calculated MW:**

56 kDa

**Observed MW:**

55 kDa

**Purification Method:**

Antigen affinity Purification

## Applications

**Tested Applications:**

WB, Indirect ELISA

**Species Specificity:**

human, mouse, rat

## Background Information

ALPI (intestinal alkaline phosphatase) is a brush-border enzyme expressed in the gut that plays a critical role in maintaining intestinal homeostasis. By dephosphorylating pro-inflammatory microbial products, it helps prevent bacterial translocation and systemic inflammation. Dysfunction or deficiency of ALPI is linked to conditions such as increased intestinal permeability, metabolic disorders, and inflammatory diseases, making it a promising therapeutic target for preserving gut health.

## Storage

**Storage:**

Store at -80°C.

**Storage Buffer:**

PBS only, pH7.3

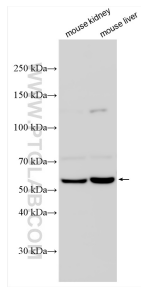
For technical support and original validation data for this product please contact:

T: 1 (888) 4PTGLAB (1-888-478-4522) (toll free in USA), or 1(312) 455-8498 (outside USA)

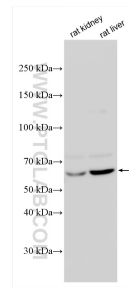
E: [proteintech@ptglab.com](mailto:proteintech@ptglab.com)  
W: [ptglab.com](http://ptglab.com)

**This product is exclusively available under Proteintech Group brand and is not available to purchase from any other manufacturer.**

## Selected Validation Data



Various lysates were subjected to SDS PAGE followed by western blot with 33485-1-AP (ALPI antibody) at dilution of 1:4000 incubated at room temperature for 1.5 hours. This data was developed using the same antibody clone with 33485-1-PBS in a different storage buffer formulation.



Various lysates were subjected to SDS PAGE followed by western blot with 33485-1-AP (ALPI antibody) at dilution of 1:4000 incubated at room temperature for 1.5 hours. This data was developed using the same antibody clone with 33485-1-PBS in a different storage buffer formulation.