

For Research Use Only

WDR42A Polyclonal antibody, PBS Only

Catalog Number: 33500-1-PBS



Basic Information

Catalog Number: 33500-1-PBS	GenBank Accession Number: BC099709	Purification Method: Antigen affinity Purification
Size: 100ug , Concentration: 1 mg/ml by Nanodrop;	GeneID (NCBI): 50717	
Source: Rabbit	UNIPROT ID: Q5TAQ9	
Isotype: IgG	Full Name: WD repeat domain 42A	
Immunogen Catalog Number: AG38765	Calculated MW: 597 aa, 67 kDa	
	Observed MW: 67-73 kDa	

Applications

Tested Applications:
WB, Indirect ELISA

Species Specificity:
human

Background Information

WD repeat-containing protein 42A (WDR42A), also named DDB1- and CUL4- associated factor 8 (DCAF8), is a member of the WD40-repeat proteins (PMID: 22500989). WDR42A is a nucleocytoplasmic shuttling protein. WDR42A acts as a substrate receptor for the CUL4-DDB1 E3 ubiquitin-protein ligase complex, which is involved in protein ubiquitination (Uniprot).

Storage

Storage:
Store at -80°C.

Storage Buffer:
PBS only, pH7.3

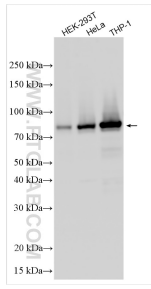
For technical support and original validation data for this product please contact:

T: 1 (888) 4PTGLAB (1-888-478-4522) (toll free in USA), or 1(312) 455-8498 (outside USA)

E: proteintech@ptglab.com
W: ptglab.com

This product is exclusively available under Proteintech Group brand and is not available to purchase from any other manufacturer.

Selected Validation Data



Various lysates were subjected to SDS PAGE followed by western blot with 33500-1-AP (WDR42A antibody) at dilution of 1:2000 incubated at room temperature for 1.5 hours. This data was developed using the same antibody clone with 33500-1-PBS in a different storage buffer formulation.