

For Research Use Only

TMEM256 Polyclonal antibody

Catalog Number: 33511-1-AP



Basic Information

| | | |
|---|--|--|
| Catalog Number: 33511-1-AP | GenBank Accession Number: BC030270 | Purification Method: Antigen affinity Purification |
| Size: 150ul , Concentration: 300 ug/ml by Nanodrop; | GeneID (NCBI): 254863 | Recommended Dilutions: WB: 1:500-1:2000 |
| Source: Rabbit | UNIPROT ID: Q8N2U0 | |
| Isotype: IgG | Full Name: chromosome 17 open reading frame 61 | |
| Immunogen Catalog Number: AG36789 | Observed MW: 12 kDa | |

Applications

| | |
|--|---|
| Tested Applications: WB, ELISA | Positive Controls: WB : A549 cells, Calu-1 cells, LNCaP cells, U-251 cells, Y79 cells |
| Species Specificity: human | |

Background Information

TMEM256, also known as C17orf61, is a member of TMEM families, encodes a protein of ~11.7 kDa, TMEM256 is expressed in proximal renal tubular cells, and its subcellular localization is in exosomes (PMID: 39991002).

Storage

Storage:
Store at -20°C. Stable for one year after shipment.
Storage Buffer:
PBS with 0.02% sodium azide and 50% glycerol, pH7.3
Aliquoting is unnecessary for -20°C storage

*** 20ul sizes contain 0.1% BSA

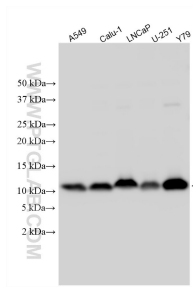
For technical support and original validation data for this product please contact:

T: 1 (888) 4PTGLAB (1-888-478-4522) (toll free in USA), or 1(312) 455-8498 (outside USA)

E: proteintech@ptglab.com
W: ptglab.com

This product is exclusively available under Proteintech Group brand and is not available to purchase from any other manufacturer.

Selected Validation Data



Various lysates were subjected to SDS PAGE followed by western blot with 33511-1-AP (TMEM256 antibody) at dilution of 1:1000 incubated at room temperature for 1.5 hours.