

For Research Use Only

SBF1 Polyclonal antibody

Catalog Number: 33515-1-AP



Basic Information

Catalog Number:

33515-1-AP

Size:

150ul , Concentration: 350 ug/ml by Nanodrop;

Source:

Rabbit

Isotype:

IgG

Immunogen Catalog Number:

AG38267

GenBank Accession Number:

CCDS93186.1

GeneID (NCBI):

6305

UNIPROT ID:

O95248

Full Name:

SET binding factor 1

Calculated MW:

208kDa 1868aa

Observed MW:

210 kDa, 140 kDa

Purification Method:

Antigen affinity Purification

Recommended Dilutions:

WB: 1:1000-1:5000

Applications

Tested Applications:

WB, ELISA

Species Specificity:

human, mouse, rat

Positive Controls:

WB : Raji cells, Ramos cells, mouse brain tissue, rat brain tissue

Background Information

Sbf1, a pseudophosphatase of the myotubularin family, is expressed at high levels in seminiferous tubules of the testis, specifically in Sertoli's cells, spermatogonia, and pachytene spermatocytes, but not in postmeiotic round spermatids. Mice that are nullizygous for Sbf1 exhibit male infertility characterized by azoospermia. Faint bands in some lanes around 150 kDa represent apparent Sbf1 degradation products (PMID: 11994405).

Storage

Storage:

Store at -20°C. Stable for one year after shipment.

Storage Buffer:

PBS with 0.02% sodium azide and 50% glycerol, pH7.3

Aliquoting is unnecessary for -20°C storage

*** 20ul sizes contain 0.1% BSA

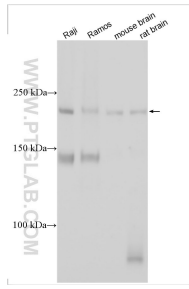
For technical support and original validation data for this product please contact:

T: 1 (888) 4PTGLAB (1-888-478-4522) (toll free in USA), or 1(312) 455-8498 (outside USA)

E: proteintech@ptglab.com
W: ptglab.com

This product is exclusively available under Proteintech Group brand and is not available to purchase from any other manufacturer.

Selected Validation Data



Various lysates were subjected to SDS PAGE followed by western blot with 33515-1-AP (SBF1 antibody) at dilution of 1:2500 incubated at room temperature for 1.5 hours.