

For Research Use Only

# SBF1 Polyclonal antibody, PBS Only

Catalog Number: 33515-1-PBS



## Basic Information

**Catalog Number:**

33515-1-PBS

**Size:**

100ug, Concentration: 1 mg/ml by Nanodrop;

**Source:**

Rabbit

**Isotype:**

IgG

**Immunogen Catalog Number:**

AG38267

**GenBank Accession Number:**

CCDS93186.1

**GeneID (NCBI):**

6305

**UNIPROT ID:**

O95248

**Full Name:**

SET binding factor 1

**Calculated MW:**

208kDa 1868aa

**Observed MW:**

210 kDa, 140 kDa

**Purification Method:**

Antigen affinity Purification

## Applications

**Tested Applications:**

WB, Indirect ELISA

**Species Specificity:**

human, mouse, rat

## Background Information

Sbf1, a pseudophosphatase of the myotubularin family, is expressed at high levels in seminiferous tubules of the testis, specifically in Sertoli's cells, spermatogonia, and pachytene spermatocytes, but not in postmeiotic round spermatids. Mice that are nullizygous for Sbf1 exhibit male infertility characterized by azoospermia. Faint bands in some lanes around 150 kDa represent apparent Sbf1 degradation products (PMID: 11994405).

## Storage

**Storage:**

Store at -80°C.

**Storage Buffer:**

PBS only, pH7.3

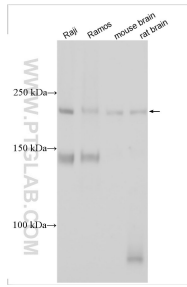
For technical support and original validation data for this product please contact:

T: 1 (888) 4PTGLAB (1-888-478-4522) (toll free in USA), or 1(312) 455-8498 (outside USA)

E: [proteintech@ptglab.com](mailto:proteintech@ptglab.com)  
W: [ptglab.com](http://ptglab.com)

**This product is exclusively available under Proteintech Group brand and is not available to purchase from any other manufacturer.**

## Selected Validation Data



Various lysates were subjected to SDS PAGE followed by western blot with 33515-1-AP (SBF1 antibody) at dilution of 1:2500 incubated at room temperature for 1.5 hours. This data was developed using the same antibody clone with 33515-1-PBS in a different storage buffer formulation.