

For Research Use Only

# GDF6/BMP-13 Polyclonal antibody

Catalog Number:33521-1-AP



## Basic Information

|   |  |  |
|---|--|--|
| <b>Catalog Number:</b><br>33521-1-AP                          | <b>GenBank Accession Number:</b><br>NM_001001557     | <b>Purification Method:</b><br>Antigen affinity Purification |
| <b>Size:</b><br>150ul , Concentration: 300 ug/ml by Nanodrop; | <b>GeneID (NCBI):</b><br>392255                      | <b>Recommended Dilutions:</b><br>WB: 1:500-1:2000            |
| <b>Source:</b><br>Rabbit                                      | <b>UNIPROT ID:</b><br>Q6KF10                         |  |
| <b>Isotype:</b><br>IgG  | <b>Full Name:</b><br>growth differentiation factor 6 |  |
| <b>Immunogen Catalog Number:</b><br>AG40394                   | <b>Calculated MW:</b><br>51 kDa                      |  |
|   | <b>Observed MW:</b><br>40-50 kDa                     |  |

## Applications

|  |  |
|--|--|
| <b>Tested Applications:</b><br>WB, ELISA | <b>Positive Controls:</b><br>WB : HUVEC cells, SK-N-SH cells |
| <b>Species Specificity:</b><br>human     |  |

## Background Information

GDF6, also known as BMP-13, is a member of the transforming growth factor-beta superfamily. GDF6 is a multifunctional growth factor that mainly functions in cells derived from the mesoderm. It can regulate the proliferation and differentiation of the retina and bones(PMID: 23307924). Mutations in GDF6 are associated with Klippel-Feil syndrome(PMID: 18425797).

## Storage

**Storage:**  
Store at -20°C. Stable for one year after shipment.  
**Storage Buffer:**  
PBS with 0.02% sodium azide and 50% glycerol, pH7.3  
Aliquoting is unnecessary for -20°C storage

\*\*\* 20ul sizes contain 0.1% BSA

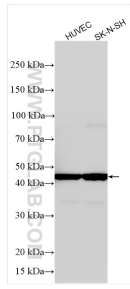
For technical support and original validation data for this product please contact:

T: 1 (888) 4PTGLAB (1-888-478-4522) (toll free in USA), or 1(312) 455-8498 (outside USA)

E: proteintech@ptglab.com  
W: ptglab.com

This product is exclusively available under Proteintech Group brand and is not available to purchase from any other manufacturer.

## Selected Validation Data



Various lysates were subjected to SDS PAGE followed by western blot with 33521-1-AP (GDF6/BMP-13 antibody) at dilution of 1:1000 incubated at room temperature for 1.5 hours.