

For Research Use Only

GDF6/BMP-13 Polyclonal antibody, PBS Only

Catalog Number:33521-1-PBS



Basic Information

Catalog Number: 33521-1-PBS	GenBank Accession Number: NM_001001557	Purification Method: Antigen affinity Purification
Size: 100ug , Concentration: 1 mg/ml by Nanodrop;	GeneID (NCBI): 392255	
Source: Rabbit	UNIPROT ID: Q6KF10	
Isotype: IgG	Full Name: growth differentiation factor 6	
Immunogen Catalog Number: AG40394	Calculated MW: 51 kDa	
	Observed MW: 40-50 kDa	

Applications

Tested Applications:
WB, Indirect ELISA

Species Specificity:
human

Background Information

GDF6, also known as BMP-13, is a member of the transforming growth factor-beta superfamily. GDF6 is a multifunctional growth factor that mainly functions in cells derived from the mesoderm. It can regulate the proliferation and differentiation of the retina and bones(PMID: 23307924). Mutations in GDF6 are associated with Klippel-Feil syndrome(PMID: 18425797).

Storage

Storage:
Store at -80°C.
Storage Buffer:
PBS only, pH7.3

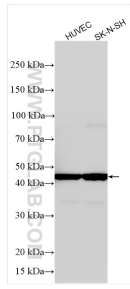
For technical support and original validation data for this product please contact:

T: 1 (888) 4PTGLAB (1-888-478-4522) (toll free in USA), or 1(312) 455-8498 (outside USA)

E: proteintech@ptglab.com
W: ptglab.com

This product is exclusively available under Proteintech Group brand and is not available to purchase from any other manufacturer.

Selected Validation Data



Various lysates were subjected to SDS PAGE followed by western blot with 33521-1-AP (GDF6/BMP-13 antibody) at dilution of 1:1000 incubated at room temperature for 1.5 hours. This data was developed using the same antibody clone with 33521-1-PBS in a different storage buffer formulation.