

For Research Use Only

# CCDC88A Polyclonal antibody

Catalog Number: 33569-1-AP



## Basic Information

<b>Catalog Number:</b> 33569-1-AP	<b>GenBank Accession Number:</b> BC132736	<b>Purification Method:</b> Antigen affinity Purification
<b>Size:</b> 150ul , Concentration: 360 ug/ml by Nanodrop;	<b>GeneID (NCBI):</b> 55704	<b>Recommended Dilutions:</b> WB: 1:500-1:2000
<b>Source:</b> Rabbit	<b>UNIPROT ID:</b> Q3V6T2	
<b>Isotype:</b> IgG	<b>Full Name:</b> coiled-coil domain containing 88A	
<b>Immunogen Catalog Number:</b> AG37983	<b>Observed MW:</b> 220 kDa	

## Applications

<b>Tested Applications:</b> WB, ELISA	<b>Positive Controls:</b> WB : A431 cells,
<b>Species Specificity:</b> human	

## Background Information

CCDC88A, also named as APE, GRDN and KIAA1212, belongs to the CCDC88 family. CCDC88A enhances phosphoinositide 3-kinase (PI3K)-dependent phosphorylation and kinase activity of AKT1/PKB, but does not possess kinase activity itself. Phosphorylation of AKT1/PKB thereby it induces the phosphorylation of downstream effectors GSK3 and FOXO1/FKHR, and regulates DNA replication and cell proliferation. CCDC88A is essential for the integrity of the actin cytoskeleton and for cell migration. It is required for formation of actin stress fibers and lamellipodia. It may be involved in membrane sorting in the early endosome.

## Storage

**Storage:**  
Store at -20°C. Stable for one year after shipment.  
**Storage Buffer:**  
PBS with 0.02% sodium azide and 50% glycerol, pH7.3  
Aliquoting is unnecessary for -20°C storage

\*\*\* 20ul sizes contain 0.1% BSA

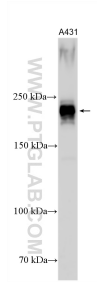
For technical support and original validation data for this product please contact:

T: 1 (888) 4PTGLAB (1-888-478-4522) (toll free in USA), or 1(312) 455-8498 (outside USA)

E: [proteintech@ptglab.com](mailto:proteintech@ptglab.com)  
W: [ptglab.com](http://ptglab.com)

This product is exclusively available under Proteintech Group brand and is not available to purchase from any other manufacturer.

## Selected Validation Data



Various lysates were subjected to SDS PAGE followed by western blot with 33569-1-AP (CCDC88A antibody) at dilution of 1:1000 incubated at room temperature for 1.5 hours.