

For Research Use Only

# ESS2/DGCR14 Polyclonal antibody

Catalog Number: 33574-1-AP



## Basic Information

<b>Catalog Number:</b> 33574-1-AP	<b>GenBank Accession Number:</b> NM_022719	<b>Purification Method:</b> Antigen affinity Purification
<b>Size:</b> 150ul , Concentration: 430 ug/ml by Nanodrop;	<b>GeneID (NCBI):</b> 8220	<b>Recommended Dilutions:</b> WB: 1:2000-1:12000
<b>Source:</b> Rabbit	<b>UNIPROT ID:</b> Q96DF8	
<b>Isotype:</b> IgG	<b>Full Name:</b> DiGeorge syndrome critical region gene 14	
<b>Immunogen Catalog Number:</b> AG37915	<b>Calculated MW:</b> 476aa, 53 kDa	
	<b>Observed MW:</b> 50-60 kDa	

## Applications

<b>Tested Applications:</b> WB, ELISA	<b>Positive Controls:</b> WB : DU 145 cells, HEK-293 cells, LNCaP cells, PC-3 cells
<b>Species Specificity:</b> human	

## Background Information

ESS2 splicing factor homolog (ESS2), also named DiGeorge-syndrome critical region 14 (DGCR14), acts as a transcriptional co-activator for retinoic acid receptor-related orphan nuclear receptor gamma/gamma-t (Rory /γ t). Ess2 is a nuclear protein with a coiled-coil domain [6] that is conserved from yeasts to humans. ESS2 is a member of the deletion gene cluster in the 22q11.2 deletion syndrome (22q11.2DS, also known as DiGeorge syndrome or CATCH 22 syndrome). The syndrome is characterized by varying defects of the heart, thymus and parathyroid glands.

## Storage

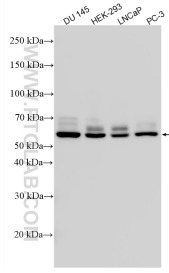
**Storage:**  
Store at -20°C. Stable for one year after shipment.  
**Storage Buffer:**  
PBS with 0.02% sodium azide and 50% glycerol, pH7.3  
Aliquoting is unnecessary for -20°C storage

\*\*\* 20ul sizes contain 0.1% BSA

For technical support and original validation data for this product please contact:  
T: 1 (888) 4PTGLAB (1-888-478-4522) (toll free in USA), or 1(312) 455-8498 (outside USA)  
E: proteintech@ptglab.com  
W: ptglab.com

This product is exclusively available under Proteintech Group brand and is not available to purchase from any other manufacturer.

## Selected Validation Data



Various lysates were subjected to SDS PAGE followed by western blot with 33574-1-AP (DGCR14 antibody) at dilution of 1:6000 incubated at room temperature for 1.5 hours.