

For Research Use Only

SEMA6A Polyclonal antibody

Catalog Number:33577-1-AP



Basic Information

Catalog Number:

33577-1-AP

Size:

150ul , Concentration: 380 ug/ml by Nanodrop;

Source:

Rabbit

Isotype:

IgG

Immunogen Catalog Number:

AG40550

GenBank Accession Number:

BC032619

GeneID (NCBI):

57556

UNIPROT ID:

Q9H2E6

Full Name:

sema domain, transmembrane domain (TM), and cytoplasmic domain, (semaphorin) 6A

Calculated MW:

1030 aa, 114 kDa

Observed MW:

114 kDa

Purification Method:

Antigen affinity Purification

Recommended Dilutions:

WB: 1:500-1:2000

Applications

Tested Applications:

WB, ELISA

Species Specificity:

human

Positive Controls:

WB : HeLa cells,

Background Information

Semaphorin 6A (SEMA6A) is a member of the semaphorin family. In humans it is encoded on chromosome 5 and is expressed most strongly in the developing and adult nervous system, but it is also present in heart, kidney, adrenal gland and placenta. SEMA6A overexpression alleviated CRC progression by inhibiting tumor growth and metastasis both in vivo and in vitro (PMID: 41259456).

Storage

Storage:

Store at -20°C. Stable for one year after shipment.

Storage Buffer:

PBS with 0.02% sodium azide and 50% glycerol, pH7.3

Aliquoting is unnecessary for -20°C storage

*** 20ul sizes contain 0.1% BSA

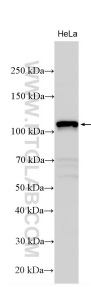
For technical support and original validation data for this product please contact:

T: 1 (888) 4PTGLAB (1-888-478-4522) (toll free in USA), or 1(312) 455-8498 (outside USA)

E: proteintech@ptglab.com
W: ptglab.com

This product is exclusively available under Proteintech Group brand and is not available to purchase from any other manufacturer.

Selected Validation Data



Various lysates were subjected to SDS PAGE followed by western blot with 33577-1-AP (SEMA6A antibody) at dilution of 1:1000 incubated at room temperature for 1.5 hours.