

For Research Use Only

# SEMA6A Polyclonal antibody, PBS Only

Catalog Number: 33577-1-PBS



## Basic Information

**Catalog Number:**

33577-1-PBS

**Size:**

100ug, Concentration: 1 mg/ml by Nanodrop;

**Source:**

Rabbit

**Isotype:**

IgG

**Immunogen Catalog Number:**

AG40550

**GenBank Accession Number:**

BC032619

**GeneID (NCBI):**

57556

**UNIPROT ID:**

Q9H2E6

**Full Name:**

sema domain, transmembrane domain (TM), and cytoplasmic domain, (semaphorin) 6A

**Calculated MW:**

1030 aa, 114 kDa

**Observed MW:**

114 kDa

**Purification Method:**

Antigen affinity Purification

## Applications

**Tested Applications:**

WB, Indirect ELISA

**Species Specificity:**

human

## Background Information

Semaphorin 6A (SEMA6A) is a member of the semaphorin family. In humans it is encoded on chromosome 5 and is expressed most strongly in the developing and adult nervous system, but it is also present in heart, kidney, adrenal gland and placenta. SEMA6A overexpression alleviated CRC progression by inhibiting tumor growth and metastasis both in vivo and in vitro (PMID: 41259456).

## Storage

**Storage:**

Store at -80°C.

**Storage Buffer:**

PBS only, pH7.3

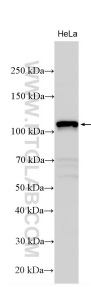
For technical support and original validation data for this product please contact:

T: 1 (888) 4PTGLAB (1-888-478-4522) (toll free in USA), or 1(312) 455-8498 (outside USA)

E: [proteintech@ptglab.com](mailto:proteintech@ptglab.com)  
W: [ptglab.com](http://ptglab.com)

**This product is exclusively available under Proteintech Group brand and is not available to purchase from any other manufacturer.**

## Selected Validation Data



Various lysates were subjected to SDS PAGE followed by western blot with 33577-1-AP (SEMA6A antibody) at dilution of 1:1000 incubated at room temperature for 1.5 hours. This data was developed using the same antibody clone with 33577-1-PBS in a different storage buffer formulation.