

For Research Use Only

# TBC1D8 Polyclonal antibody, PBS Only

Catalog Number: 33583-1-PBS



## Basic Information

**Catalog Number:**

33583-1-PBS

**Size:**

100ug, Concentration: 1 mg/ml by Nanodrop;

**Source:**

Rabbit

**Isotype:**

IgG

**Immunogen Catalog Number:**

AG35398

**GenBank Accession Number:**

NM\_001102426

**GeneID (NCBI):**

11138

**UNIPROT ID:**

O95759

**Full Name:**

TBC1 domain family, member 8 (with GRAM domain)

**Calculated MW:**

130kDa

**Observed MW:**

130 kDa

**Purification Method:**

Antigen affinity Purification

## Applications

**Tested Applications:**

WB, IHC, Indirect ELISA

**Species Specificity:**

human

## Background Information

The TBC1D8 protein is a member of the TBC domain family and functions as a GTPase-activating protein (GAP) that negatively regulates the activity of small G proteins of the Rab family, participating in the fine-tuning of intracellular vesicle transport and signal transduction. This protein has garnered significant attention in reproductive and cancer research. Studies have shown that TBC1D8 is a key determinant of oocyte maturation and female fertility, with defects in its expression leading to embryonic development arrest. Moreover, TBC1D8 is abnormally overexpressed in various cancers (such as breast and lung cancer), where it acts as an oncogene by modulating signaling pathways related to cell proliferation, invasion, and metastasis (e.g., the EGFR/Ras pathway). Thus, it serves as a potential biomarker for disease diagnosis and a therapeutic target.

## Storage

**Storage:**

Store at -80°C.

**Storage Buffer:**

PBS only, pH7.3

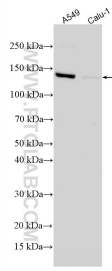
For technical support and original validation data for this product please contact:

T: 1 (888) 4PTGLAB (1-888-478-4522) (toll free in USA), or 1(312) 455-8498 (outside USA)

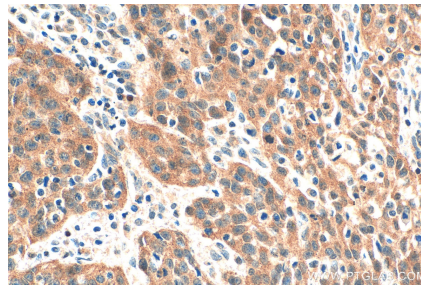
E: [proteintech@ptglab.com](mailto:proteintech@ptglab.com)  
W: [ptglab.com](http://ptglab.com)

**This product is exclusively available under Proteintech Group brand and is not available to purchase from any other manufacturer.**

## Selected Validation Data



Various lysates were subjected to SDS PAGE followed by western blot with 33583-1-AP (TBC1D8 antibody) at dilution of 1:800 incubated at room temperature for 1.5 hours. This data was developed using the same antibody clone with 33583-1-PBS in a different storage buffer formulation.



Immunohistochemical analysis of paraffin-embedded human cervical cancer tissue slide using 33583-1-AP (TBC1D8 antibody) at dilution of 1:200 (under 40x lens). Heat mediated antigen retrieval with Tris-EDTA buffer (pH 9.0). This data was developed using the same antibody clone with 33583-1-PBS in a different storage buffer formulation.