

For Research Use Only

# GIMAP6 Polyclonal antibody

Catalog Number:33593-1-AP



## Basic Information

<b>Catalog Number:</b> 33593-1-AP	<b>GenBank Accession Number:</b> NM_024711.5	<b>Purification Method:</b> Antigen affinity Purification
<b>Size:</b> 150ul , Concentration: 350 µg/ml by Nanodrop;	<b>GeneID (NCBI):</b> 474344	<b>Recommended Dilutions:</b> WB: 1:500-1:2000
<b>Source:</b> Rabbit	<b>UNIPROT ID:</b> Q6P9H5	
<b>Isotype:</b> IgG	<b>Full Name:</b> GTPase, IMAP family member 6	
<b>Immunogen Catalog Number:</b> AG38704	<b>Calculated MW:</b> 33kDa 292aa	
	<b>Observed MW:</b> 30-35 kDa	

## Applications

<b>Tested Applications:</b> WB, ELISA	<b>Positive Controls:</b> WB : HUVEC cells, Jurkat cells
<b>Species Specificity:</b> human	

## Background Information

GTPase of immunity associated protein 6 (GIMAP6) is a member of the GIMAP family of small GTPases predominantly expressed in lymphoid tissues. GIMAP6 plays a critical role in regulating immune cell survival, particularly in T and B lymphocytes. It localizes to the endoplasmic reticulum and mitochondria, where it modulates autophagy and apoptosis pathways. Studies indicate that GIMAP6 deficiency leads to spontaneous apoptosis of lymphocytes, highlighting its essential function in maintaining immune homeostasis. Additionally, GIMAP6 has been implicated in autoimmune diseases and certain hematological malignancies, making it an emerging therapeutic target for modulating immune responses and treating lymphocyte-related disorders (PMID: 35551368; 33328581; 29718959).

## Storage

**Storage:**  
Store at -20°C. Stable for one year after shipment.  
**Storage Buffer:**  
PBS with 0.02% sodium azide and 50% glycerol, pH7.3  
**Aliquoting is unnecessary for -20°C storage**

**\*\*\* 20ul sizes contain 0.1% BSA**

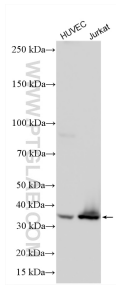
For technical support and original validation data for this product please contact:

T: 1 (888) 4PTGLAB (1-888-478-4522) (toll free in USA), or 1(312) 455-8498 (outside USA)

E: [proteintech@ptglab.com](mailto:proteintech@ptglab.com)  
W: [ptglab.com](http://ptglab.com)

**This product is exclusively available under Proteintech Group brand and is not available to purchase from any other manufacturer.**

## Selected Validation Data



Various lysates were subjected to SDS PAGE followed by western blot with 33593-1-AP (GIMAP6 antibody) at dilution of 1:1000 incubated at room temperature for 1.5 hours.