

For Research Use Only

# NCAPH2 Polyclonal antibody

Catalog Number: 33595-1-AP



## Basic Information

<b>Catalog Number:</b> 33595-1-AP	<b>GenBank Accession Number:</b> NM_001115132	<b>Purification Method:</b> Antigen affinity Purification
<b>Size:</b> 150ul , Concentration: 370 ug/ml by Nanodrop;	<b>GeneID (NCBI):</b> 52683	<b>Recommended Dilutions:</b> WB: 1:500-1:2000
<b>Source:</b> Rabbit	<b>UNIPROT ID:</b> Q8BSP2	
<b>Isotype:</b> IgG	<b>Full Name:</b> non-SMC condensin II complex, subunit H2	
<b>Immunogen Catalog Number:</b> AG38706	<b>Calculated MW:</b> 69 kDa	
	<b>Observed MW:</b> 68-80 kDa	

## Applications

<b>Tested Applications:</b> WB, ELISA	<b>Positive Controls:</b> WB : HeLa cells, PC-12 cells, J774A.1 cells, RAW 264.7 cells
<b>Species Specificity:</b> human, mouse	

## Background Information

NCAPH2 is a subunit of the condensin-2 complex involved in chromosome condensation during mitosis and meiosis. Peripheral blood DNA methylation levels in the NCAPH2/LMF2 promoter region were significantly decreased in patients with AD and those with amnesic mild cognitive impairment (aMCI); therefore, these are considered to be a potentially useful biomarker for the diagnosis of AD. (PMID: 33603659)

## Storage

**Storage:**  
Store at -20°C. Stable for one year after shipment.  
**Storage Buffer:**  
PBS with 0.02% sodium azide and 50% glycerol, pH7.3  
Aliquoting is unnecessary for -20°C storage

\*\*\* 20ul sizes contain 0.1% BSA

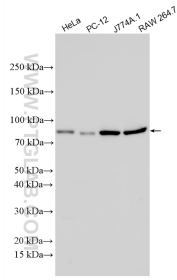
For technical support and original validation data for this product please contact:

T: 1 (888) 4PTGLAB (1-888-478-4522) (toll free in USA), or 1(312) 455-8498 (outside USA)

E: [proteintech@ptglab.com](mailto:proteintech@ptglab.com)  
W: [ptglab.com](http://ptglab.com)

This product is exclusively available under Proteintech Group brand and is not available to purchase from any other manufacturer.

## Selected Validation Data



Various lysates were subjected to SDS PAGE followed by western blot with 33595-1-AP (Ncaph2 antibody) at dilution of 1:1000 incubated at room temperature for 1.5 hours.