

For Research Use Only

# CARS2 Polyclonal antibody

Catalog Number:33597-1-AP

Featured Product



## Basic Information

**Catalog Number:**

33597-1-AP

**Size:**

150ul , Concentration: 370 ug/ml by Nanodrop;

**Source:**

Rabbit

**Isotype:**

IgG

**Immunogen Catalog Number:**

AG38943

**GenBank Accession Number:**

NM\_024537.3

**GeneID (NCBI):**

79587

**UNIPROT ID:**

Q9HA77

**Full Name:**

cysteinyl-tRNA synthetase 2, mitochondrial (putative)

**Calculated MW:**

62kDa 564aa

**Observed MW:**

55-63kd

**Purification Method:**

Antigen affinity Purification

**Recommended Dilutions:**

WB: 1:1000-1:4000

IP: 0.5-4.0 ug for 1.0-3.0 mg of total protein lysate

IF/ICC: 1:200-1:800

## Applications

**Tested Applications:**

WB, IF/ICC, IP, ELISA

**Species Specificity:**

human

**Positive Controls:**

WB : SK-BR-3 cells,

IP : SK-BR-3 cells,

IF/ICC : A431 cells,

## Background Information

Cars2 (mitochondrial cysteine-tRNA synthetase 2) is a class I aminoacyl-tRNA synthetase encoded by nuclear gene, which locates in mitochondria. Its core function is to catalyze cysteine to bind to corresponding trna, and ensure the translation of mitochondrial protein. Its mutation will cause diseases related to mitochondrial dysfunction.

## Storage

**Storage:**

Store at -20°C. Stable for one year after shipment.

**Storage Buffer:**

PBS with 0.02% sodium azide and 50% glycerol, pH7.3

Aliquoting is unnecessary for -20°C storage

\*\*\* 20ul sizes contain 0.1% BSA

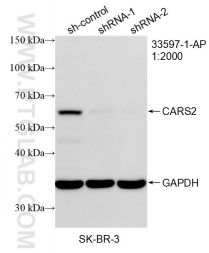
For technical support and original validation data for this product please contact:

T: 1 (888) 4PTGLAB (1-888-478-4522) (toll free in USA), or 1(312) 455-8498 (outside USA)

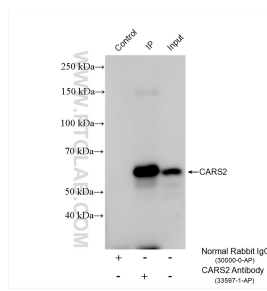
E: [proteintech@ptglab.com](mailto:proteintech@ptglab.com)  
W: [ptglab.com](http://ptglab.com)

This product is exclusively available under Proteintech Group brand and is not available to purchase from any other manufacturer.

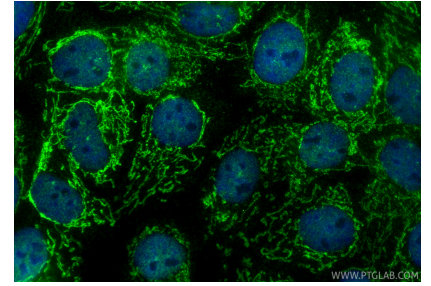
## Selected Validation Data



WB result of CARS2 antibody (33597-1-AP; 1:2000; incubated at room temperature for 1.5 hours) with sh-Control and sh-CARS2 transfected SK-BR-3 cells.



IP result of anti-CARS2 (IP:33597-1-AP, 4 $\mu$ g; Detection:33597-1-AP 1:3000) with SK-BR-3 cells lysate 1600  $\mu$ g.



Immunofluorescent analysis of (4% PFA) fixed A431 cells using CARS2 antibody (33597-1-AP) at dilution of 1:400 and CoraLite@488-Conjugated Goat Anti-Rabbit IgG(H+L) (SA00013-2).