

For Research Use Only

ZZEF1 Polyclonal antibody

Catalog Number: 33605-1-AP



Basic Information

Catalog Number: 33605-1-AP	GenBank Accession Number: BC151836	Purification Method: Antigen affinity Purification
Size: 150ul , Concentration: 400 ug/ml by Nanodrop;	GeneID (NCBI): 23140	Recommended Dilutions: WB: 1:200-1:1000
Source: Rabbit	UNIPROT ID: O43149	
Isotype: IgG	Full Name: zinc finger, ZZ-type with EF-hand domain 1	
Immunogen Catalog Number: AG35406	Observed MW: 300-330 kDa	

Applications

Tested Applications: WB, ELISA	Positive Controls: WB : HeLa cells, mouse liver tissue, mouse heart tissue, mouse brain tissue
Species Specificity: human, mouse	

Background Information

ZZEF1 is a large cytoplasmic protein distinguished by a ZZ-type zinc finger and an EF-hand calcium-binding domain, hinting at a role in linking protein-protein interactions with calcium-mediated signaling. Its functions are not fully elucidated, but growing evidence suggests involvement in cilia formation, cytoskeletal organization, and cell signaling regulation. Mutations or dysregulation of ZZEF1 have been linked to ciliopathies, tumor biology, and possible neurodevelopmental conditions, making it a gene of emerging biomedical interest. (PMID: 33227311)

Storage

Storage:
Store at -20°C. Stable for one year after shipment.
Storage Buffer:
PBS with 0.02% sodium azide and 50% glycerol, pH7.3
Aliquoting is unnecessary for -20°C storage

*** 20ul sizes contain 0.1% BSA

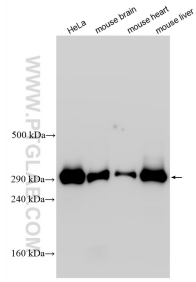
For technical support and original validation data for this product please contact:

T: 1 (888) 4PTGLAB (1-888-478-4522) (toll free in USA), or 1(312) 455-8498 (outside USA)

E: proteintech@ptglab.com
W: ptglab.com

This product is exclusively available under Proteintech Group brand and is not available to purchase from any other manufacturer.

Selected Validation Data



Various lysates were subjected to Tris-Acetate gel system followed by western blot with 33605-1-AP (ZEF1 antibody) at dilution of 1:300 incubated at room temperature for 1.5 hours.