

For Research Use Only

GLCE Polyclonal antibody

Catalog Number: 33606-1-AP



Basic Information

Catalog Number: 33606-1-AP	GenBank Accession Number: BC160046	Purification Method: Antigen affinity Purification
Size: 150ul , Concentration: 300 ug/ml by Nanodrop;	GeneID (NCBI): 26035	Recommended Dilutions: WB: 1:500-1:1000
Source: Rabbit	UNIPROT ID: O94923	
Isotype: IgG	Full Name: glucuronic acid epimerase	
Immunogen Catalog Number: AG35424	Observed MW: 70 kDa	

Applications

Tested Applications: WB, ELISA	Positive Controls: WB : rat liver tissue, mouse liver tissue
Species Specificity: human, mouse, rat	

Background Information

GLCE encodes the C5-epimerase responsible for converting glucuronic acid to iduronic acid during heparan sulfate biosynthesis. Localized in the Golgi apparatus, it indirectly regulates growth factor signaling, angiogenesis, and cell-cell interactions through structural diversification of glycosaminoglycan chains. Dysregulation of GLCE has been associated with cancer progression and developmental abnormalities, highlighting its role at the interface of glycobiology and disease. (PMID: 24499487)

Storage

Storage:
Store at -20°C. Stable for one year after shipment.
Storage Buffer:
PBS with 0.02% sodium azide and 50% glycerol, pH7.3
Aliquoting is unnecessary for -20°C storage

*** 20ul sizes contain 0.1% BSA

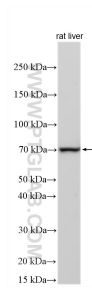
For technical support and original validation data for this product please contact:

T: 1 (888) 4PTGLAB (1-888-478-4522) (toll free in USA), or 1(312) 455-8498 (outside USA)

E: proteintech@ptglab.com
W: ptglab.com

This product is exclusively available under Proteintech Group brand and is not available to purchase from any other manufacturer.

Selected Validation Data



Various lysates were subjected to SDS PAGE followed by western blot with 33606-1-AP (GLCE antibody) at dilution of 1:500 incubated at room temperature for 1.5 hours.