

For Research Use Only

GLCE Polyclonal antibody, PBS Only

Catalog Number: 33606-1-PBS



Basic Information

Catalog Number:

33606-1-PBS

Size:

100ug, Concentration: 1 mg/ml by Nanodrop;

Source:

Rabbit

Isotype:

IgG

Immunogen Catalog Number:

AG35424

GenBank Accession Number:

BC160046

GeneID (NCBI):

26035

UNIPROT ID:

O94923

Full Name:

glucuronic acid epimerase

Observed MW:

70 kDa

Purification Method:

Antigen affinity Purification

Applications

Tested Applications:

WB, Indirect ELISA

Species Specificity:

human, mouse, rat

Background Information

GLCE encodes the C5-epimerase responsible for converting glucuronic acid to iduronic acid during heparan sulfate biosynthesis. Localized in the Golgi apparatus, it indirectly regulates growth factor signaling, angiogenesis, and cell-cell interactions through structural diversification of glycosaminoglycan chains. Dysregulation of GLCE has been associated with cancer progression and developmental abnormalities, highlighting its role at the interface of glycobiology and disease.

Storage

Storage:

Store at -80°C.

Storage Buffer:

PBS only, pH7.3

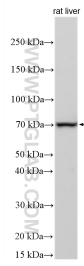
For technical support and original validation data for this product please contact:

T: 1 (888) 4PTGLAB (1-888-478-4522) (toll free in USA), or 1(312) 455-8498 (outside USA)

E: proteintech@ptglab.com
W: ptglab.com

This product is exclusively available under Proteintech Group brand and is not available to purchase from any other manufacturer.

Selected Validation Data



Various lysates were subjected to SDS PAGE followed by western blot with 33606-1-AP (GLCE antibody) at dilution of 1:500 incubated at room temperature for 1.5 hours. This data was developed using the same antibody clone with 33606-1-PBS in a different storage buffer formulation.