

For Research Use Only

# JRKL Polyclonal antibody, PBS Only

Catalog Number: 33618-1-PBS



## Basic Information

Catalog Number:

33618-1-PBS

Size:

100ug, Concentration: 1 mg/ml by Nanodrop;

Source:

Rabbit

Isotype:

IgG

Immunogen Catalog Number:

AG37706

GenBank Accession Number:

BC109202

GeneID (NCBI):

8690

UNIPROT ID:

Q9Y4A0

Full Name:

jerky homolog-like (mouse)

Calculated MW:

524 aa, 60 kDa

Observed MW:

60 kDa

Purification Method:

Antigen affinity Purification

## Applications

Tested Applications:

WB, Indirect ELISA

Species Specificity:

human

## Background Information

JRKL encodes a Jerky-like RNA regulatory protein enriched in neuronal tissues, where it likely contributes to mRNA transport and translational control. Localized in both nucleus and cytoplasm, JRKL may act as a signal-responsive RNA modulator involved in neuronal excitability and stress adaptation. Although its functions remain partially characterized, emerging evidence links JRKL to neurodevelopmental regulation, cancer biology, and RNA-protein network dynamics.

## Storage

Storage:

Store at -80°C.

Storage Buffer:

PBS only, pH7.3

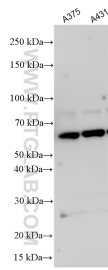
For technical support and original validation data for this product please contact:

T: 1 (888) 4PTGLAB (1-888-478-4522) (toll free in USA), or 1(312) 455-8498 (outside USA)

E: [proteintech@ptglab.com](mailto:proteintech@ptglab.com)  
W: [ptglab.com](http://ptglab.com)

**This product is exclusively available under Proteintech Group brand and is not available to purchase from any other manufacturer.**

## Selected Validation Data



Various lysates were subjected to SDS PAGE followed by western blot with 33618-1-AP (JRKL antibody) at dilution of 1:1000 incubated at room temperature for 1.5 hours. This data was developed using the same antibody clone with 33618-1-PBS in a different storage buffer formulation.