

For Research Use Only

CRYBA4 Polyclonal antibody

Catalog Number:33621-1-AP



Basic Information

Catalog Number: 33621-1-AP	GenBank Accession Number: BC069404	Purification Method: Antigen affinity Purification
Size: 150ul , Concentration: 340 ug/ml by Nanodrop;	GeneID (NCBI): 1413	Recommended Dilutions: WB: 1:20000-1:100000
Source: Rabbit	UNIPROT ID: P53673	
Isotype: IgG	Full Name: crystallin, beta A4	
Immunogen Catalog Number: AG39089	Calculated MW: 196 aa, 22 kDa	
	Observed MW: 22 kDa	

Applications

Tested Applications: WB, ELISA	Positive Controls: WB : mouse eye tissue, rat eye tissue
Species Specificity: human, mouse, rat	

Background Information

CRYBA4, also called β A4-crystallin, is the dominant structural components of the vertebrate eye lens (PMID: 16960806). Missense mutations of CRYBA4 (e.g., p.R95W, p.V150D) predicted to be highly pathogenic are linked with autosomal-dominant congenital cataract, indicating that both crystallin aggregation and non-lens signaling functions merit therapeutic targeting (PMID: 31935276).

Storage

Storage:
Store at -20°C. Stable for one year after shipment.
Storage Buffer:
PBS with 0.02% sodium azide and 50% glycerol, pH7.3
Aliquoting is unnecessary for -20°C storage

*** 20ul sizes contain 0.1% BSA

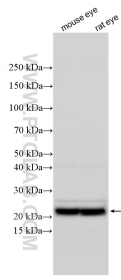
For technical support and original validation data for this product please contact:

T: 1 (888) 4PTGLAB (1-888-478-4522) (toll free in USA), or 1(312) 455-8498 (outside USA)

E: proteintech@ptglab.com
W: ptglab.com

This product is exclusively available under Proteintech Group brand and is not available to purchase from any other manufacturer.

Selected Validation Data



Various lysates were subjected to SDS PAGE followed by western blot with 33621-1-AP (CRYBA4 antibody) at dilution of 1:80000 incubated at room temperature for 1.5 hours.