

For Research Use Only

# CRYBA4 Polyclonal antibody, PBS Only

Catalog Number: 33621-1-PBS



## Basic Information

**Catalog Number:**

33621-1-PBS

**Size:**

100ug, Concentration: 1 mg/ml by Nanodrop;

**Source:**

Rabbit

**Isotype:**

IgG

**Immunogen Catalog Number:**

AG39089

**GenBank Accession Number:**

BC069404

**GeneID (NCBI):**

1413

**UNIPROT ID:**

P53673

**Full Name:**

crystallin, beta A4

**Calculated MW:**

196 aa, 22 kDa

**Observed MW:**

22 kDa

**Purification Method:**

Antigen affinity Purification

## Applications

**Tested Applications:**

WB, Indirect ELISA

**Species Specificity:**

human, mouse, rat

## Background Information

CRYBA4, also called  $\beta$ A4-crystallin, is the dominant structural components of the vertebrate eye lens (PMID: 16960806). Missense mutations of CRYBA4 (e.g., p.R95W, p.V150D) predicted to be highly pathogenic are linked with autosomal-dominant congenital cataract, indicating that both crystallin aggregation and non-lens signaling functions merit therapeutic targeting (PMID: 31935276).

## Storage

**Storage:**

Store at -80°C.

**Storage Buffer:**

PBS only, pH7.3

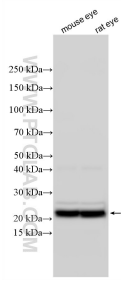
For technical support and original validation data for this product please contact:

T: 1 (888) 4PTGLAB (1-888-478-4522) (toll free in USA), or 1(312) 455-8498 (outside USA)

E: [proteintech@ptglab.com](mailto:proteintech@ptglab.com)  
W: [ptglab.com](http://ptglab.com)

**This product is exclusively available under Proteintech Group brand and is not available to purchase from any other manufacturer.**

## Selected Validation Data



Various lysates were subjected to SDS PAGE followed by western blot with 33621-1-AP (CRYBA4 antibody) at dilution of 1:80000 incubated at room temperature for 1.5 hours. This data was developed using the same antibody clone with 33621-1-PBS in a different storage buffer formulation.