

For Research Use Only

WDR66 Polyclonal antibody

Catalog Number: 33624-1-AP



Basic Information

Catalog Number: 33624-1-AP	GenBank Accession Number: BC028421	Purification Method: Antigen affinity Purification
Size: 150ul , Concentration: 570 ug/ml by Nanodrop;	GeneID (NCBI): 144406	Recommended Dilutions: WB: 1:500-1:3000
Source: Rabbit	UNIPROT ID: Q8TBY9	
Isotype: IgG	Full Name: WD repeat domain 66	
Immunogen Catalog Number: AG36992	Observed MW: 46 kDa, 130kDa	

Applications

Tested Applications: WB, ELISA	Positive Controls: WB : A431 cells, MDA-MB-231 cells, MDA-MB-453 cells
Species Specificity: human	

Background Information

WDR66 (WD repeat domain 66), also designated as CFAP251 (cilia- and flagella-associated protein 251), is a member of the WD40 repeat domain protein family. Members of this family typically serve as scaffold molecules facilitating the assembly of diverse protein complexes. The primary function of WDR66/CFAP251 is intimately associated with the structural integrity and motility of sperm flagella and motile cilia. As an essential constituent of the calmodulin- and spoke-associated complex, WDR66/CFAP251 localizes to the base of the axonemal radial spokes and plays a critical role in the proper assembly, stability, and motility of sperm flagella.

Storage

Storage:
Store at -20°C. Stable for one year after shipment.
Storage Buffer:
PBS with 0.02% sodium azide and 50% glycerol, pH7.3
Aliquoting is unnecessary for -20°C storage

*** 20ul sizes contain 0.1% BSA

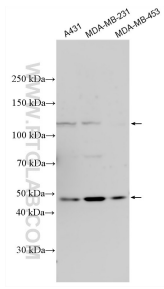
For technical support and original validation data for this product please contact:

T: 1 (888) 4PTGLAB (1-888-478-4522) (toll free in USA), or 1(312) 455-8498 (outside USA)

E: proteintech@ptglab.com
W: ptglab.com

This product is exclusively available under Proteintech Group brand and is not available to purchase from any other manufacturer.

Selected Validation Data



Various lysates were subjected to SDS PAGE followed by western blot with 33624-1-AP (WDR66 antibody) at dilution of 1:1500 incubated at room temperature for 1.5 hours.