

For Research Use Only

GGA3 Polyclonal antibody, PBS Only

Catalog Number: 33639-1-PBS



Basic Information

Catalog Number:

33639-1-PBS

Size:

100ug, Concentration: 1 mg/ml by Nanodrop;

Source:

Rabbit

Isotype:

IgG

Immunogen Catalog Number:

AG38658

GenBank Accession Number:

NM_138619.3

GeneID (NCBI):

23163

UNIPROT ID:

Q9NZ52

Full Name:

golgi associated, gamma adaptin ear containing, ARF binding protein 3

Calculated MW:

78kDa 723aa

Observed MW:

90 kDa

Purification Method:

Antigen affinity Purification

Applications

Tested Applications:

WB, IF/ICC, Indirect ELISA

Species Specificity:

human

Background Information

Golgi-associated, gamma-adaptin ear-containing, ARF-binding protein 3 (GGA3) is a monomeric clathrin adaptor that localizes predominantly to the trans-Golgi network (TGN) and endosomal membranes. Beyond classical cargo sorting, GGA3 participates in receptor recycling, retrograde transport and signal termination. Notably, caspase-3 cleaves GGA3 during apoptosis or cerebral ischaemia; loss of this adaptor stabilises β -secretase (BACE1), thereby increasing amyloid- β production and linking GGA3 to Alzheimer disease pathogenesis. Recent work further implicates GGA3 in oncogenic processes: in non-small-cell lung cancer it supports TrkA trafficking to the plasma membrane, prolonging Akt/ERK signalling and promoting cell survival. (PMID: 39267722, PMID: 37586201)

Storage

Storage:

Store at -80°C.

Storage Buffer:

PBS only, pH7.3

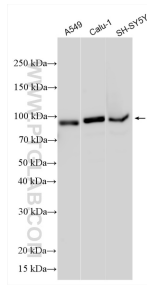
For technical support and original validation data for this product please contact:

T: 1 (888) 4PTGLAB (1-888-478-4522) (toll free in USA), or 1(312) 455-8498 (outside USA)

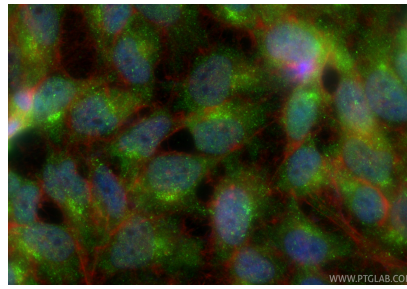
E: proteintech@ptglab.com
W: ptglab.com

This product is exclusively available under Proteintech Group brand and is not available to purchase from any other manufacturer.

Selected Validation Data



Various lysates were subjected to SDS PAGE followed by western blot with 33639-1-AP (GGA3 antibody) at dilution of 1:2000 incubated at room temperature for 1.5 hours. This data was developed using the same antibody clone with 33639-1-PBS in a different storage buffer formulation.



Immunofluorescent analysis of (-20°C Ethanol) fixed HeLa cells using GGA3 antibody (33639-1-AP) at dilution of 1:400 and CoraLite® 488-Conjugated Goat Anti-Rabbit IgG(H+L) (SA00013-2), CL594-phalloidin (red). This data was developed using the same antibody clone with 33639-1-PBS in a different storage buffer formulation.