

For Research Use Only

LTBR Polyclonal antibody

Catalog Number: 33655-1-AP



Basic Information

Catalog Number: 33655-1-AP	GenBank Accession Number: NM_010736	Purification Method: Antigen affinity Purification
Size: 150ul , Concentration: 570 µg/ml by Nanodrop;	GeneID (NCBI): 17000	Recommended Dilutions: WB: 1:500-1:1000
Source: Rabbit	UNIPROT ID: P50284	
Isotype: IgG	Full Name: Lymphotoxin B receptor	
Immunogen Catalog Number: EG6278	Calculated MW: 45 kDa	
	Observed MW: 60 kDa	

Applications

Tested Applications: WB, ELISA	Positive Controls: WB : Recombinant protein,
Species Specificity: mouse	

Background Information

Lymphotoxin-beta receptor (LTBR) is a receptor for the heterotrimeric lymphotoxin containing LTA and LTB, and for TNFS14/LIGHT. It can activate the NF-kappa-B signaling pathway upon stimulation with lymphotoxin (LTA1-LTB2) (PMID: 24248355). LTBR is constitutively expressed on stromal cells and myeloid lineage cells but not on T or B lymphocytes, which may be a novel immune checkpoint of tumor-associated macrophages (PMID: 20603617; 39429877).

Storage

Storage:
Store at -20°C. Stable for one year after shipment.
Storage Buffer:
PBS with 0.02% sodium azide and 50% glycerol, pH7.3
Aliquoting is unnecessary for -20°C storage

*** 20ul sizes contain 0.1% BSA

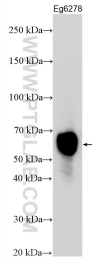
For technical support and original validation data for this product please contact:

T: 1 (888) 4PTGLAB (1-888-478-4522) (toll free in USA), or 1(312) 455-8498 (outside USA)

E: proteintech@ptglab.com
W: ptglab.com

This product is exclusively available under Proteintech Group brand and is not available to purchase from any other manufacturer.

Selected Validation Data



Mouse LTBR Recombinant protein (Cat No.Eg6278) were subjected to SDS PAGE followed by western blot with 33655-1-AP (LTBR antibody) at dilution of 1:500 incubated at room temperature for 1.5 hours.