

For Research Use Only

CD239/BCAM Polyclonal antibody

Catalog Number:33665-1-AP



Basic Information

Catalog Number: 33665-1-AP	GenBank Accession Number: NM_020486.2	Purification Method: Antigen affinity Purification
Size: 150ul , Concentration: 610 ug/ml by Nanodrop;	GeneID (NCBI): 57278	Recommended Dilutions: WB: 1:2000-1:12000 IHC: 1:50-1:500 IF-P: 1:150-1:600
Source: Rabbit	UNIPROT ID: Q9R069	
Isotype: IgG	Full Name: basal cell adhesion molecule	
Immunogen Catalog Number: EG6306	Calculated MW: 68 kDa	
	Observed MW: 67 kDa, 78-85 kDa	

Applications

Tested Applications:
WB, IHC, IF-P, ELISA

Species Specificity:
mouse, rat

Note-IHC: suggested antigen retrieval with TE buffer pH 9.0; (*) Alternatively, antigen retrieval may be performed with citrate buffer pH 6.0

Positive Controls:

WB : mouse heart tissue, mouse kidney tissue, rat heart tissue, rat kidney tissue

IHC : mouse kidney tissue, mouse heart tissue

IF-P : mouse kidney tissue,

Background Information

Basal cell adhesion molecule (Lu/BCAM) is a membrane-bound glycoprotein of the immunoglobulin superfamily (IgSF), functioning as a receptor for the extracellular matrix protein, laminin. BCAM (Lutheran/basal cell-adhesion molecule, a glycoprotein) belongs to the immunoglobulin superfamily which contains both Lu blood group and BCAM tumor-associated antigens. Proteomics analysis suggests that BCAM might be a potential biomarker for pancreatic cancer (PMID: 19199705). BCAM, involved in cell adhesion and migration, can also promote tumor metastasis and has been elucidated to play a functional role in the metastasis of thyroid cancer and gastric cancer (PMID: 10728810, 35941663). De-glycosylated BCAM has a predicted molecular weight of 67 kDa. Two BCAM glycoprotein (gp) isoforms are present on human RBCs, Lu (85 kDa) and Lu(v13) (78 kDa); they result from the alternative splicing of intron 13 and differ by the lengths of their cytoplasmic domains (PMID: 23160466).

Storage

Storage:
Store at -20°C. Stable for one year after shipment.
Storage Buffer:
PBS with 0.02% sodium azide and 50% glycerol, pH7.3
Aliquoting is unnecessary for -20°C storage

*** 20ul sizes contain 0.1% BSA

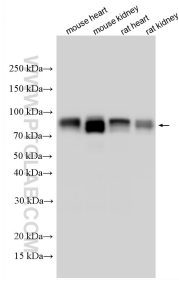
For technical support and original validation data for this product please contact:

T: 1 (888) 4PTGLAB (1-888-478-4522) (toll free in USA), or 1(312) 455-8498 (outside USA)

E: proteintech@ptglab.com
W: ptglab.com

This product is exclusively available under Proteintech Group brand and is not available to purchase from any other manufacturer.

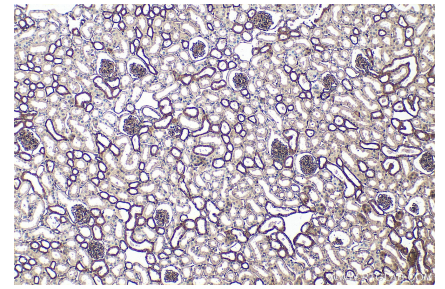
Selected Validation Data



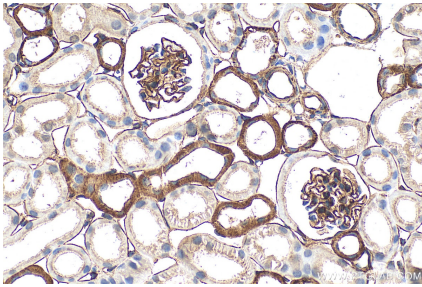
Various lysates were subjected to SDS PAGE followed by western blot with 33665-1-AP (CD239/BCAM antibody) at dilution of 1:6000 incubated at room temperature for 1.5 hours.



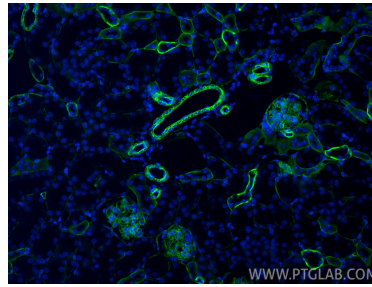
Immunohistochemical analysis of paraffin-embedded mouse heart tissue slide using 33665-1-AP (CD239/BCAM antibody) at dilution of 1:200 (under 10x lens). Heat mediated antigen retrieval with Tris-EDTA buffer (pH 9.0).



Immunohistochemical analysis of paraffin-embedded mouse kidney tissue slide using 33665-1-AP (CD239/BCAM antibody) at dilution of 1:200 (under 10x lens). Heat mediated antigen retrieval with Tris-EDTA buffer (pH 9.0).



Immunohistochemical analysis of paraffin-embedded mouse kidney tissue slide using 33665-1-AP (CD239/BCAM antibody) at dilution of 1:200 (under 40x lens). Heat mediated antigen retrieval with Tris-EDTA buffer (pH 9.0).



Immunofluorescent analysis of (4% PFA) fixed paraffin-embedded mouse kidney tissue using CD239/BCAM antibody (33665-1-AP) at dilution of 1:300 and CoraLite®488-Conjugated Goat Anti-Rabbit IgG(H+L) (SA00013-2). Heat mediated antigen retrieval with Tris-EDTA buffer (pH 9.0).