

For Research Use Only

CRYL1 Polyclonal antibody

Catalog Number: 33679-1-AP



Basic Information

Catalog Number: 33679-1-AP	GenBank Accession Number: NM_015974.2	Purification Method: Antigen affinity Purification
Size: 150ul , Concentration: 260 ug/ml by Nanodrop;	GeneID (NCBI): 51084	Recommended Dilutions: WB: 1:2000-1:12000
Source: Rabbit	UNIPROT ID: Q9Y2S2	
Isotype: IgG	Full Name: crystallin, lambda 1	
Immunogen Catalog Number: AG38269	Calculated MW: 35kDa 319aa	
	Observed MW: 35 kDa	

Applications

Tested Applications: WB, ELISA	Positive Controls: WB : mouse kidney tissue, rat kidney tissue
Species Specificity: human, mouse, rat	

Background Information

CRYL1 (Crystallin Lambda 1) is a ubiquitously-expressed, dual-function protein that was first isolated from rabbit lens tissue. Human CRYL1 is encoded at chromosomal locus 13q12.11, contains two HCDH (3-hydroxyacyl-CoA dehydrogenase) domains, and is most abundant in liver and kidney, with only trace expression in peripheral-blood leukocytes and thymus. Further research showed that CRYL1 was expressed at lower levels in HCC tumors than in adjacent tissues, and this reduced expression was associated with advanced tumor staging, larger tumors, and decreased patient disease-free survival.

Storage

Storage:
Store at -20°C. Stable for one year after shipment.
Storage Buffer:
PBS with 0.02% sodium azide and 50% glycerol, pH7.3
Aliquoting is unnecessary for -20°C storage

*** 20ul sizes contain 0.1% BSA

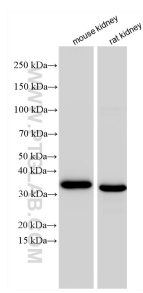
For technical support and original validation data for this product please contact:

T: 1 (888) 4PTGLAB (1-888-478-4522) (toll free in USA), or 1(312) 455-8498 (outside USA)

E: proteintech@ptglab.com
W: ptglab.com

This product is exclusively available under Proteintech Group brand and is not available to purchase from any other manufacturer.

Selected Validation Data



Various lysates were subjected to SDS PAGE followed by western blot with 33679-1-AP (CRYL1 antibody) at dilution of 1:6000 incubated at room temperature for 1.5 hours.