

For Research Use Only

# RESF1 Polyclonal antibody

Catalog Number: 33680-1-AP

Featured Product



## Basic Information

**Catalog Number:**

33680-1-AP

**Size:**

150ul , Concentration: 340 ug/ml by Nanodrop;

**Source:**

Rabbit

**Isotype:**

IgG

**Immunogen Catalog Number:**

AG38168

**GenBank Accession Number:**

BC140819

**GeneID (NCBI):**

55196

**UNIPROT ID:**

Q9HCM1

**Full Name:**

chromosome 12 open reading frame 35

**Calculated MW:**

1747 aa, 195 kDa

**Observed MW:**

240-250 kDa

**Purification Method:**

Antigen affinity Purification

**Recommended Dilutions:**

WB: 1:2000-1:10000

## Applications

**Tested Applications:**

WB, ELISA

**Species Specificity:**

human

**Positive Controls:**

WB : Caco-2 cells, K-562 cells, HUVEC cells

## Background Information

RESF1 (Retroelement Silencing Factor 1, also known as C12orf35 or KIAA1551) is a nuclear protein that primarily mediates the epigenetic silencing of endogenous retroviruses (ERVs) and imprinted genes by interacting with the SETDB1 histone methyltransferase, thereby maintaining H3K9me3 modifications and heterochromatin conformation. Recent studies have revealed that RESF1 exerts metastasis-suppressive functions in estrogen receptor-negative breast cancer. Additionally, RESF1 negatively regulates ribosomal biogenesis and global protein translation, serving as a multifunctional factor that links genome stability, stem cell pluripotency, and tumor suppression.

## Storage

**Storage:**

Store at -20°C. Stable for one year after shipment.

**Storage Buffer:**

PBS with 0.02% sodium azide and 50% glycerol, pH7.3

Aliquoting is unnecessary for -20°C storage

\*\*\* 20ul sizes contain 0.1% BSA

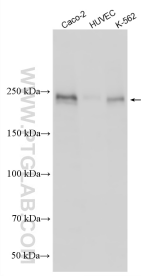
For technical support and original validation data for this product please contact:

T: 1 (888) 4PTGLAB (1-888-478-4522) (toll free in USA), or 1(312) 455-8498 (outside USA)

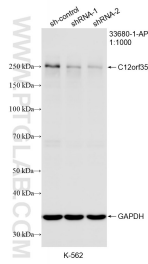
E: [proteintech@ptglab.com](mailto:proteintech@ptglab.com)  
W: [ptglab.com](http://ptglab.com)

This product is exclusively available under Proteintech Group brand and is not available to purchase from any other manufacturer.

## Selected Validation Data



Various lysates were subjected to SDS PAGE followed by western blot with 33680-1-AP (C12orf35 antibody) at dilution of 1:5000 incubated at room temperature for 1.5 hours.



WB result of C12orf35 antibody (33680-1-AP; 1:1000; incubated at room temperature for 1.5 hours) with sh-Control and sh-C12orf35 transfected K-562 cells.