

For Research Use Only

RESF1 Polyclonal antibody, PBS Only

Catalog Number: 33680-1-PBS **Featured Product**



Basic Information

Catalog Number:

33680-1-PBS

Size:

100ug, Concentration: 1 mg/ml by Nanodrop;

Source:

Rabbit

Isotype:

IgG

Immunogen Catalog Number:

AG38168

GenBank Accession Number:

BC140819

GeneID (NCBI):

55196

UNIPROT ID:

Q9HCM1

Full Name:

chromosome 12 open reading frame

35

Calculated MW:

1747 aa, 195 kDa

Observed MW:

240-250 kDa

Purification Method:

Antigen affinity Purification

Applications

Tested Applications:

WB, Indirect ELISA

Species Specificity:

human

Background Information

RESF1 (Retroelement Silencing Factor 1, also known as C12orf35 or KIAA1551) is a nuclear protein that primarily mediates the epigenetic silencing of endogenous retroviruses (ERVs) and imprinted genes by interacting with the SETDB1 histone methyltransferase, thereby maintaining H3K9me3 modifications and heterochromatin conformation. Recent studies have revealed that RESF1 exerts metastasis-suppressive functions in estrogen receptor-negative breast cancer. Additionally, RESF1 negatively regulates ribosomal biogenesis and global protein translation, serving as a multifunctional factor that links genome stability, stem cell pluripotency, and tumor suppression.

Storage

Storage:

Store at -80°C.

Storage Buffer:

PBS only, pH7.3

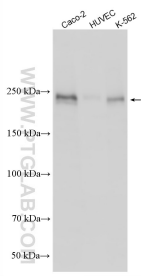
For technical support and original validation data for this product please contact:

T: 1 (888) 4PTGLAB (1-888-478-4522) (toll free in USA), or 1(312) 455-8498 (outside USA)

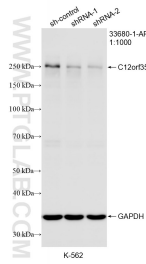
E: proteintech@ptglab.com
W: ptglab.com

This product is exclusively available under Proteintech Group brand and is not available to purchase from any other manufacturer.

Selected Validation Data



Various lysates were subjected to SDS PAGE followed by western blot with 33680-1-AP (C12orf35 antibody) at dilution of 1:5000 incubated at room temperature for 1.5 hours. This data was developed using the same antibody clone with 33680-1-PBS in a different storage buffer formulation.



WB result of C12orf35 antibody (33680-1-AP; 1:1000; incubated at room temperature for 1.5 hours) with sh-Control and sh-C12orf35 transfected K-562 cells. This data was developed using the same antibody clone with 33680-1-PBS in a different storage buffer formulation.