

For Research Use Only

# PLCB4 Polyclonal antibody

Catalog Number: 33683-1-AP



## Basic Information

<b>Catalog Number:</b> 33683-1-AP	<b>GenBank Accession Number:</b> NM_182797.2	<b>Purification Method:</b> Antigen affinity Purification
<b>Size:</b> 150ul , Concentration: 280 ug/ml by Nanodrop;	<b>GeneID (NCBI):</b> 5332	<b>Recommended Dilutions:</b> WB: 1:1000-1:6000
<b>Source:</b> Rabbit	<b>UNIPROT ID:</b> Q15147	
<b>Isotype:</b> IgG	<b>Full Name:</b> phospholipase C, beta 4	
<b>Immunogen Catalog Number:</b> AG38268	<b>Calculated MW:</b> 134 kDa 1175aa	
	<b>Observed MW:</b> 134 kDa	

## Applications

**Tested Applications:**  
WB, ELISA

**Species Specificity:**  
human

**Positive Controls:**

WB : RAW 264.7 cells, mouse cerebellum tissue, rat cerebellum tissue

## Background Information

Phospholipase C beta 4 (PLCB4) is a direct effector of the endothelin receptor signaling pathway that plays an essential role in lower jaw and middle ear structures development (PMID: 35284927). Additionally, PLCB4 has a critical role in osteosarcoma progression and may serve as a novel diagnostic or therapeutic target in pediatric patients with acute myeloid leukemia (PMID: 39987366; 31788080).

## Storage

**Storage:**  
Store at -20°C. Stable for one year after shipment.

**Storage Buffer:**  
PBS with 0.02% sodium azide and 50% glycerol, pH7.3

Aliquoting is unnecessary for -20°C storage

\*\*\* 20ul sizes contain 0.1% BSA

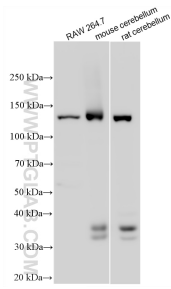
For technical support and original validation data for this product please contact:

T: 1 (888) 4PTGLAB (1-888-478-4522) (toll free in USA), or 1(312) 455-8498 (outside USA)

E: [proteintech@ptglab.com](mailto:proteintech@ptglab.com)  
W: [ptglab.com](http://ptglab.com)

This product is exclusively available under Proteintech Group brand and is not available to purchase from any other manufacturer.

## Selected Validation Data



Various lysates were subjected to SDS PAGE followed by western blot with 33683-1-AP (PLCB4 antibody) at dilution of 1:3000 incubated at room temperature for 1.5 hours.