

For Research Use Only

YKT6 Polyclonal antibody

Catalog Number: 33685-1-AP



Basic Information

Catalog Number: 33685-1-AP	GenBank Accession Number: BC007319	Purification Method: Antigen affinity Purification
Size: 150ul , Concentration: 300 ug/ml by Nanodrop;	GeneID (NCBI): 10652	Recommended Dilutions: WB: 1:1000-1:6000 IHC: 1:250-1:1000 IF/ICC: 1:200-1:800
Source: Rabbit	UNIPROT ID: O15498	
Isotype: IgG	Full Name: YKT6 v-SNARE homolog (S. cerevisiae)	
Immunogen Catalog Number: AG38740	Calculated MW: 22 kDa	
	Observed MW: 25 kDa	

Applications

Tested Applications:
WB, IHC, IF/ICC, ELISA

Species Specificity:
human, rat

Note-IHC: suggested antigen retrieval with TE buffer pH 9.0; (*) Alternatively, antigen retrieval may be performed with citrate buffer pH 6.0

Positive Controls:

WB: A549 cells, Calu-1 cells, HeLa cells, rat brain tissue

IHC: human ovary tumor tissue,

IF/ICC: A431 cells, U-251 cells

Background Information

YKT6 is a soluble N-ethylmaleimide-sensitive factor attachment protein receptor (SNARE) that plays a central role in membrane fusion in eukaryotic cells. It is primarily localized in the cytoplasm and, through its unique dual lipidation modification (palmitoylation and farnesylation), can associate with various organelle membranes, such as the Golgi apparatus, endosomes, and vesicles. By forming stable trans-SNARE complexes with other SNARE proteins (e.g., Syntaxin and SNAP-25 family members) on target membranes, YKT6 provides the driving force for membrane fusion, thereby facilitating intracellular trafficking. This protein is essential for maintaining organelle integrity, autophagy, and secretory pathways. Studies have shown that dysfunction of YKT6 is associated with various diseases, including cancer, neurodegenerative disorders, and metabolic abnormalities, making it a potential target for drug development.

Storage

Storage:

Store at -20°C. Stable for one year after shipment.

Storage Buffer:

PBS with 0.02% sodium azide and 50% glycerol, pH7.3

Aliquoting is unnecessary for -20°C storage

*** 20ul sizes contain 0.1% BSA

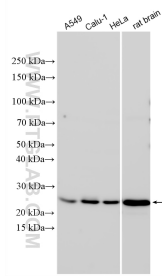
For technical support and original validation data for this product please contact:

T: 1 (888) 4PTGLAB (1-888-478-4522) (toll free in USA), or 1(312) 455-8498 (outside USA)

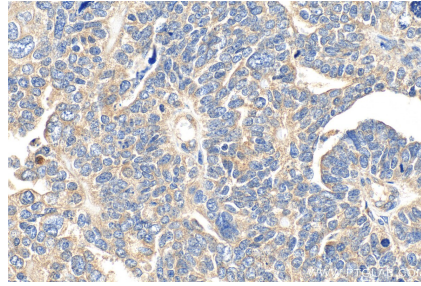
E: proteintech@ptglab.com
W: ptglab.com

This product is exclusively available under Proteintech Group brand and is not available to purchase from any other manufacturer.

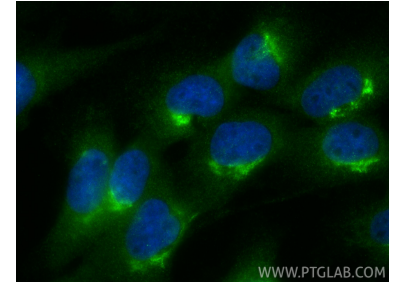
Selected Validation Data



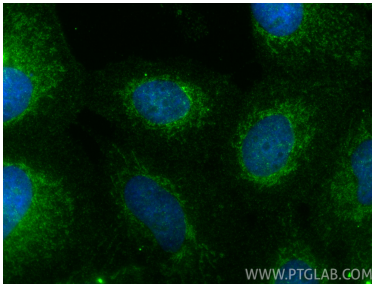
Various lysates were subjected to SDS PAGE followed by western blot with 33685-1-AP (YKT6 antibody) at dilution of 1:3000 incubated at room temperature for 1.5 hours.



Immunohistochemical analysis of paraffin-embedded human ovary tumor tissue slide using 33685-1-AP (YKT6 antibody) at dilution of 1:500 (under 40x lens). Heat mediated antigen retrieval with Tris-EDTA buffer (pH 9.0).



Immunofluorescent analysis of (4% PFA) fixed U-251 cells using YKT6 antibody (33685-1-AP) at dilution of 1:400 and CoraLite®488-Conjugated Goat Anti-Rabbit IgG(H+L) (SA00013-2).



Immunofluorescent analysis of (4% PFA) fixed A431 cells using YKT6 antibody (33685-1-AP) at dilution of 1:400 and CoraLite®488-Conjugated Goat Anti-Rabbit IgG(H+L) (SA00013-2).