

For Research Use Only

YKT6 Polyclonal antibody, PBS Only

Catalog Number: 33685-1-PBS



Basic Information

Catalog Number:

33685-1-PBS

Size:

100ug, Concentration: 1 mg/ml by Nanodrop;

Source:

Rabbit

Isotype:

IgG

Immunogen Catalog Number:

AG38740

GenBank Accession Number:

BC007319

GeneID (NCBI):

10652

UNIPROT ID:

O15498

Full Name:

YKT6 v-SNARE homolog (S. cerevisiae)

Calculated MW:

22 kDa

Observed MW:

25 kDa

Purification Method:

Antigen affinity Purification

Applications

Tested Applications:

WB, IHC, IF/ICC, Indirect ELISA

Species Specificity:

human, rat

Background Information

YKT6 is a soluble N-ethylmaleimide-sensitive factor attachment protein receptor (SNARE) that plays a central role in membrane fusion in eukaryotic cells. It is primarily localized in the cytoplasm and, through its unique dual lipidation modification (palmitoylation and farnesylation), can associate with various organelle membranes, such as the Golgi apparatus, endosomes, and vesicles. By forming stable trans-SNARE complexes with other SNARE proteins (e.g., Syntaxin and SNAP-25 family members) on target membranes, YKT6 provides the driving force for membrane fusion, thereby facilitating intracellular trafficking. This protein is essential for maintaining organelle integrity, autophagy, and secretory pathways. Studies have shown that dysfunction of YKT6 is associated with various diseases, including cancer, neurodegenerative disorders, and metabolic abnormalities, making it a potential target for drug development.

Storage

Storage:

Store at -80°C.

Storage Buffer:

PBS only, pH7.3

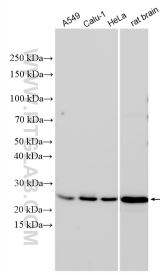
For technical support and original validation data for this product please contact:

T: 1 (888) 4PTGLAB (1-888-478-4522) (toll free in USA), or 1(312) 455-8498 (outside USA)

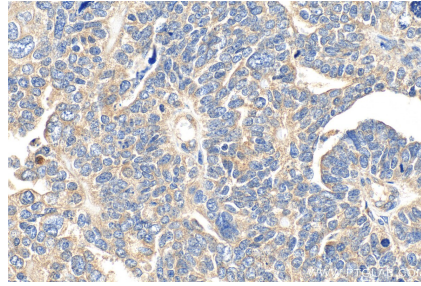
E: proteintech@ptglab.com
W: ptglab.com

This product is exclusively available under Proteintech Group brand and is not available to purchase from any other manufacturer.

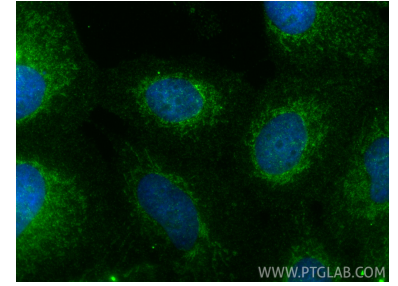
Selected Validation Data



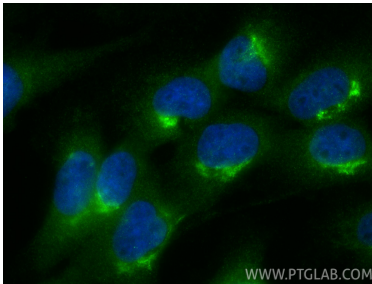
Various lysates were subjected to SDS PAGE followed by western blot with 33685-1-AP (YKT6 antibody) at dilution of 1:3000 incubated at room temperature for 1.5 hours. This data was developed using the same antibody clone with 33685-1-PBS in a different storage buffer formulation.



Immunohistochemical analysis of paraffin-embedded human ovary tumor tissue slide using 33685-1-AP (YKT6 antibody) at dilution of 1:500 (under 40x lens). Heat mediated antigen retrieval with Tris-EDTA buffer (pH 9.0). This data was developed using the same antibody clone with 33685-1-PBS in a different storage buffer formulation.



Immunofluorescent analysis of (4% PFA) fixed A431 cells using YKT6 antibody (33685-1-AP) at dilution of 1:400 and CoraLite®488-Conjugated Goat Anti-Rabbit IgG(H+L) (SA00013-2). This data was developed using the same antibody clone with 33685-1-PBS in a different storage buffer formulation.



Immunofluorescent analysis of (4% PFA) fixed U-251 cells using YKT6 antibody (33685-1-AP) at dilution of 1:400 and CoraLite®488-Conjugated Goat Anti-Rabbit IgG(H+L) (SA00013-2). This data was developed using the same antibody clone with 33685-1-PBS in a different storage buffer formulation.