

For Research Use Only

WDHD1 Polyclonal antibody

Catalog Number:33739-1-AP



Basic Information

Catalog Number: 33739-1-AP	GenBank Accession Number: NM_007086.3	Purification Method: Antigen affinity Purification
Size: 150ul , Concentration: 500 ug/ml by Nanodrop;	GeneID (NCBI): 11169	Recommended Dilutions: WB: 1:5000-1:50000
Source: Rabbit	UNIPROT ID: O75717	
Isotype: IgG	Full Name: WD repeat and HMG-box DNA binding protein 1	
Immunogen Catalog Number: AG38697	Calculated MW: 126kDa 1129aa	
	Observed MW: 126 kDa	

Applications

Tested Applications: WB, ELISA	Positive Controls: WB : A431 cells, A549 cells, Calu-1 cells, MCF-7 cells, MDA-MB-231 cells, NIH/3T3 cells
Species Specificity: human, mouse	

Background Information

The WD repeat and HMG-box DNA-binding protein 1 (WDHD1), also known as acidic nucleoplasmic DNA-binding protein 1 (AND-1), is a DNA-binding protein with a total molecular weight of 126 kDa, containing multiple N-terminal WD40 domains and a C-terminal high mobility group (HMG) box. WDHD1 contains the highly conserved SepB domain, which plays a crucial role in DNA replication processes(PMID: 37569867). WDHD1 regulates the assembly and activation of the pre-replication complex (pre-RC), and WDHD1 depletion leads to G1 stagnation and delays progression to the S phase(PMID: 36345604).

Storage

Storage:
Store at -20°C. Stable for one year after shipment.
Storage Buffer:
PBS with 0.02% sodium azide and 50% glycerol, pH7.3
Aliquoting is unnecessary for -20°C storage

*** 20ul sizes contain 0.1% BSA

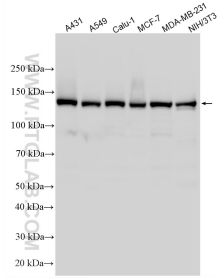
For technical support and original validation data for this product please contact:

T: 1 (888) 4PTGLAB (1-888-478-4522) (toll free in USA), or 1(312) 455-8498 (outside USA)

E: proteintech@ptglab.com
W: ptglab.com

This product is exclusively available under Proteintech Group brand and is not available to purchase from any other manufacturer.

Selected Validation Data



Various lysates were subjected to SDS PAGE followed by western blot with 33739-1-AP (WDHD1 antibody) at dilution of 1:20000 incubated at room temperature for 1.5 hours.