

For Research Use Only

SLC35A5 Polyclonal antibody, PBS Only

Catalog Number: 33755-1-PBS



Basic Information

Catalog Number:

33755-1-PBS

Size:

100ug, Concentration: 1 mg/ml by Nanodrop;

Source:

Rabbit

Isotype:

IgG

Immunogen Catalog Number:

AG8748

GenBank Accession Number:

BC005207

GeneID (NCBI):

55032

UNIPROT ID:

Q9BS91

Full Name:

solute carrier family 35, member A5

Calculated MW:

424 aa, 49 kDa

Observed MW:

45-50 kDa

Purification Method:

Antigen affinity Purification

Applications

Tested Applications:

WB, Indirect ELISA

Species Specificity:

human

Background Information

Solute carrier family 35 member A5 (SLC35A5) is a member of the SLC35A protein subfamily comprising nucleotide sugar transporters. SLC35A5 is the sole member of the SLC35 family that contains several diacidic motifs within its cytosolically exposed C-terminus, some of which might be capable of UDP-sugar binding (PMID: 30641943).

Storage

Storage:

Store at -80°C.

Storage Buffer:

PBS only, pH7.3

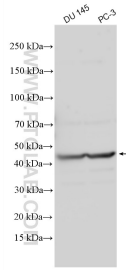
For technical support and original validation data for this product please contact:

T: 1 (888) 4PTGLAB (1-888-478-4522) (toll free in USA), or 1(312) 455-8498 (outside USA)

E: proteintech@ptglab.com
W: ptglab.com

This product is exclusively available under Proteintech Group brand and is not available to purchase from any other manufacturer.

Selected Validation Data



Various lysates were subjected to SDS PAGE followed by western blot with 33755-1-AP (SLC35A5 antibody) at dilution of 1:2000 incubated at room temperature for 1.5 hours. This data was developed using the same antibody clone with 33755-1-PBS in a different storage buffer formulation.