

For Research Use Only

SERPINB1 Polyclonal antibody

Catalog Number: 33756-1-AP



Basic Information

Catalog Number:

33756-1-AP

Size:

150ul , Concentration: 200 ug/ml by Nanodrop;

Source:

Rabbit

Isotype:

IgG

Immunogen Catalog Number:

AG35798

GenBank Accession Number:

NM_030666.3

GeneID (NCBI):

1992

UNIPROT ID:

P30740

Full Name:

serpin peptidase inhibitor, clade B (ovalbumin), member 1

Calculated MW:

43kDa 379aa

Observed MW:

42 kDa

Purification Method:

Antigen affinity Purification

Recommended Dilutions:

WB: 1:1000-1:4000

Applications

Tested Applications:

WB, ELISA

Species Specificity:

human

Positive Controls:

WB : A549 cells, Calu-1 cells, HeLa cells, HepG2 cells, L02 cells

Background Information

SERPINB1, also called Leukocyte Elastase Inhibitor (LEI) is a member of the clade B of SERPINS. It is an intracellular protein and acts primarily to protect the cell from proteases released into the cytoplasm during stress.

Storage

Storage:

Store at -20°C. Stable for one year after shipment.

Storage Buffer:

PBS with 0.02% sodium azide and 50% glycerol, pH7.3

Aliquoting is unnecessary for -20°C storage

***** 20ul sizes contain 0.1% BSA**

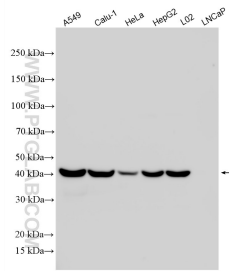
For technical support and original validation data for this product please contact:

T: 1 (888) 4PTGLAB (1-888-478-4522) (toll free in USA), or 1(312) 455-8498 (outside USA)

E: proteintech@ptglab.com
W: ptglab.com

This product is exclusively available under Proteintech Group brand and is not available to purchase from any other manufacturer.

Selected Validation Data



Various lysates were subjected to SDS PAGE followed by western blot with 33756-1-AP (SERPINB1 antibody) at dilution of 1:2000 incubated at room temperature for 1.5 hours.