

For Research Use Only

# METTL10 Polyclonal antibody

Catalog Number: 33763-1-AP



## Basic Information

<b>Catalog Number:</b> 33763-1-AP	<b>GenBank Accession Number:</b> BC026167	<b>Purification Method:</b> Antigen affinity Purification
<b>Size:</b> 150ul , Concentration: 300 ug/ml by Nanodrop;	<b>GeneID (NCBI):</b> 399818	<b>Recommended Dilutions:</b> WB: 1:500-1:3000 IHC: 1:200-1:500 IF/ICC: 1:200-1:800
<b>Source:</b> Rabbit	<b>UNIPROT ID:</b> Q5JPI9	
<b>Isotype:</b> IgG	<b>Full Name:</b> methyltransferase like 10	
<b>Immunogen Catalog Number:</b> AG37000	<b>Observed MW:</b> 26 kDa	

## Applications

**Tested Applications:**  
WB, IHC, IF/ICC, ELISA

**Species Specificity:**  
human, mouse

**Note-IHC: suggested antigen retrieval with TE buffer pH 9.0; (\*) Alternatively, antigen retrieval may be performed with citrate buffer pH 6.0**

**Positive Controls:**

WB : A431 cells, DU 145 cells, Daudi cells, Raji cells

IHC : mouse brain tissue,

IF/ICC : A431 cells,

## Background Information

Methyltransferase-like 10 (METTL10) is a lysine trimethyltransferase targeting eukaryotic translation elongation factor 1A1 (eEF1A1), which is well preserved from simple eukaryotes such as *Saccharomyces cerevisiae* to mammals such as humans and mice. Recently, METTL10 was identified as an estimated glomerular filtration rate (eGFR)-associated gene through a transethnic genome-wide association study of eGFR. (PMID: 39774961)

## Storage

**Storage:**

Store at -20°C. Stable for one year after shipment.

**Storage Buffer:**

PBS with 0.02% sodium azide and 50% glycerol, pH7.3

Aliquoting is unnecessary for -20°C storage

\*\*\* 20ul sizes contain 0.1% BSA

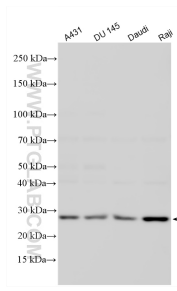
For technical support and original validation data for this product please contact:

T: 1 (888) 4PTGLAB (1-888-478-4522) (toll free in USA), or 1(312) 455-8498 (outside USA)

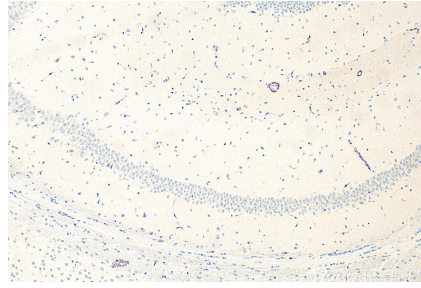
E: [proteintech@ptglab.com](mailto:proteintech@ptglab.com)  
W: [ptglab.com](http://ptglab.com)

This product is exclusively available under Proteintech Group brand and is not available to purchase from any other manufacturer.

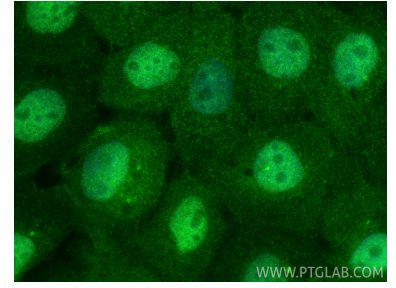
## Selected Validation Data



Various lysates were subjected to SDS PAGE followed by western blot with 33763-1-AP (METTL10 antibody) at dilution of 1:1500 incubated at room temperature for 1.5 hours.



Immunohistochemical analysis of paraffin-embedded mouse brain tissue slide using 33763-1-AP (METTL10 antibody) at dilution of 1:500 (under 10x lens). Heat mediated antigen retrieval with Tris-EDTA buffer (pH 9.0).



Immunofluorescent analysis of (4% PFA) fixed A431 cells using METTL10 antibody (33763-1-AP) at dilution of 1:400 and CoraLite®488-Conjugated Goat Anti-Rabbit IgG(H+L) (SA00013-2).