

For Research Use Only

METTL10 Polyclonal antibody, PBS Only

Catalog Number: 33763-1-PBS



Basic Information

Catalog Number: 33763-1-PBS	GenBank Accession Number: BC026167	Purification Method: Antigen affinity Purification
Size: 100ug , Concentration: 1 mg/ml by Nanodrop;	GeneID (NCBI): 399818	
Source: Rabbit	UNIPROT ID: Q5JPI9	
Isotype: IgG	Full Name: methyltransferase like 10	
Immunogen Catalog Number: AG37000	Observed MW: 26 kDa	

Applications

Tested Applications:
WB, IHC, IF/ICC, Indirect ELISA

Species Specificity:
human, mouse

Background Information

Methyltransferase-like 10 (METTL10) is a lysine trimethyltransferase targeting eukaryotic translation elongation factor 1A1 (eEF1A1), which is well preserved from simple eukaryotes such as *Saccharomyces cerevisiae* to mammals such as humans and mice. Recently, METTL10 was identified as an estimated glomerular filtration rate (eGFR)-associated gene through a transethnic genome-wide association study of eGFR. (PMID: 39774961)

Storage

Storage:
Store at -80°C.

Storage Buffer:
PBS only, pH7.3

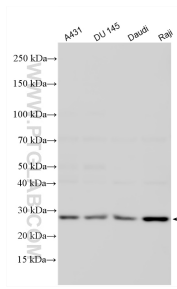
For technical support and original validation data for this product please contact:

T: 1 (888) 4PTGLAB (1-888-478-4522) (toll free in USA), or 1(312) 455-8498 (outside USA)

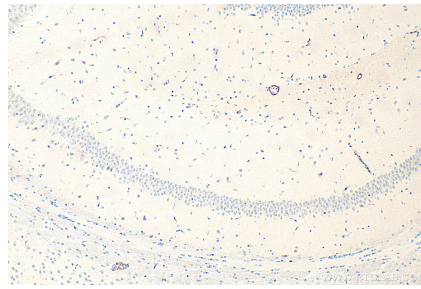
E: proteintech@ptglab.com
W: ptglab.com

This product is exclusively available under Proteintech Group brand and is not available to purchase from any other manufacturer.

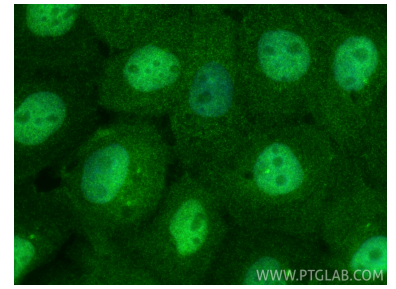
Selected Validation Data



Various lysates were subjected to SDS PAGE followed by western blot with 33763-1-AP (METTL10 antibody) at dilution of 1:1500 incubated at room temperature for 1.5 hours. This data was developed using the same antibody clone with 33763-1-PBS in a different storage buffer formulation.



Immunohistochemical analysis of paraffin-embedded mouse brain tissue slide using 33763-1-AP (METTL10 antibody) at dilution of 1:500 (under 10x lens). Heat mediated antigen retrieval with Tris-EDTA buffer (pH 9.0). This data was developed using the same antibody clone with 33763-1-PBS in a different storage buffer formulation.



Immunofluorescent analysis of (4% PFA) fixed A431 cells using METTL10 antibody (33763-1-AP) at dilution of 1:400 and CoraLite®488-Conjugated Goat Anti-Rabbit IgG(H+L) (SA00013-2). This data was developed using the same antibody clone with 33763-1-PBS in a different storage buffer formulation.