

For Research Use Only

PGA4 Polyclonal antibody, PBS Only

Catalog Number: 33764-1-PBS



Basic Information

Catalog Number: 33764-1-PBS	GenBank Accession Number: NM_001079808.3	Purification Method: Antigen affinity Purification
Size: 100ug , Concentration: 1 mg/ml by Nanodrop;	GeneID (NCBI): 643847	
Source: Rabbit	UNIPROT ID: PODJD7	
Isotype: IgG	Full Name: pepsinogen 4, group I (pepsinogen A)	
Immunogen Catalog Number: AG37827	Calculated MW: 42kDa 388aa	
	Observed MW: 42-45 kDa	

Applications

Tested Applications:
WB, Indirect ELISA

Species Specificity:
human, pig

Background Information

PGA4(Pepsinogen A4), also known as pepsinogen A, is a member of Peptidase A1 family. PGA4 is the precursor protein of digestive enzyme Pepsin, which is synthesized and secreted by the chief cells of gastric mucosa. Autocatalytic cleavage occurs under acidic conditions (pH 1-3), and about 41-44 amino acid fragments at the N-terminal are removed to form active pepsin. Serum pepsinogen level can be used as an important biomarker: screening index of atrophic gastritis, early diagnosis and screening of gastric cancer. The ratio (PGR) of pepsinogen I (PGI, mainly PGA) to pepsinogen II (PGII) is an important parameter to evaluate the function of gastric mucosa. The observed molecular weight is 42-45 kDa.

Storage

Storage:
Store at -80°C.

Storage Buffer:
PBS only, pH7.3

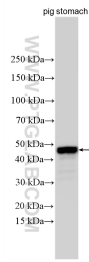
For technical support and original validation data for this product please contact:

T: 1 (888) 4PTGLAB (1-888-478-4522) (toll free in USA), or 1(312) 455-8498 (outside USA)

E: proteintech@ptglab.com
W: ptglab.com

This product is exclusively available under Proteintech Group brand and is not available to purchase from any other manufacturer.

Selected Validation Data



Various lysates were subjected to SDS PAGE followed by western blot with 33764-1-AP (PGA4 antibody) at dilution of 1:5000 incubated at room temperature for 1.5 hours. This data was developed using the same antibody clone with 33764-1-PBS in a different storage buffer formulation.