

For Research Use Only

Siglec-H Polyclonal antibody

Catalog Number: 33801-1-AP



Basic Information

Catalog Number: 33801-1-AP	GenBank Accession Number: /	Purification Method: Antigen affinity Purification
Size: 150ul , Concentration: 440 ug/ml by Nanodrop;	GeneID (NCBI): 233274	Recommended Dilutions: WB: 1:200-1:1000
Source: Rabbit	UNIPROT ID: Q3Y597	
Isotype: IgG	Full Name: sialic acid binding Ig-like lectin H	
Immunogen Catalog Number: EG6216	Calculated MW: 34 kDa	
	Observed MW: 35 kDa	

Applications

Tested Applications: WB, ELISA	Positive Controls: WB : mouse kidney tissue,
Species Specificity: mouse	

Storage

Storage:
Store at -20°C. Stable for one year after shipment.
Storage Buffer:
PBS with 0.02% sodium azide and 50% glycerol, pH7.3
Aliquoting is unnecessary for -20°C storage

***** 20ul sizes contain 0.1% BSA**

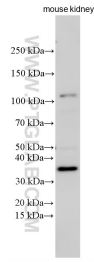
For technical support and original validation data for this product please contact:

T: 1 (888) 4PTGLAB (1-888-478-4522) (toll free in USA), or 1(312) 455-8498 (outside USA)

E: proteintech@ptglab.com
W: ptglab.com

This product is exclusively available under Proteintech Group brand and is not available to purchase from any other manufacturer.

Selected Validation Data



Mouse kidney tissue lysates were subjected to SDS PAGE followed by western blot with 33801-1-AP (Siglec-H antibody) at dilution of 1:400 incubated at room temperature for 1.5 hours.