

For Research Use Only

MECP2 Polyclonal antibody

Catalog Number:33824-1-AP



Basic Information

Catalog Number:

33824-1-AP

Size:

150ul , Concentration: 370 ug/ml by Nanodrop;

Source:

Rabbit

Isotype:

IgG

Immunogen Catalog Number:

AG29614

GenBank Accession Number:

BC011612

GeneID (NCBI):

4204

UNIPROT ID:

P51608

Full Name:

methyl CpG binding protein 2 (Rett syndrome)

Calculated MW:

52 kDa, 53 kDa

Observed MW:

75-80 kDa

Purification Method:

Antigen affinity Purification

Recommended Dilutions:

WB: 1:2000-1:16000

Applications

Tested Applications:

WB, ELISA

Species Specificity:

human, mouse, rat

Positive Controls:

WB : mouse brain tissue, mouse lung tissue, rat brain tissue, rat lung tissue

Background Information

METHYL-CpG-BINDING PROTEIN 2(MECP2), is a chromatin-associated protein that can both activate and repress transcription. Mecp2 in the adult mouse is high in the brain, lung, and spleen, lower in heart and kidney. MECP2 takes part in the control of neuronal activity-dependent gene regulation, and this process may underlie the pathology of Rett syndrome, a severe developmental disorder with autistic phenotypes. As compared to wild-type monkeys, MECP2 transgenic monkeys exhibited a higher frequency of repetitive circular locomotion and increased stress responses, as measured by the threat-related anxiety and defensive test. Chromosomal protein that binds to methylated DNA. It can bind specifically to a single methyl-CpG pair. It is not influenced by sequences flanking the methyl-CpGs. Mediates transcriptional repression through interaction with histone deacetylase and the corepressor SIN3A. Two isoforms of MECP2 exist due to alternative splicing events. This antibody reacts with the MECP2 and phosphorylated MECP2 proteins. The calculated molecular weight of MECP2 is a 52 kDa, but the post-modified MECP2 protein is about 75-80 kDa (PMID: 12160743).

Storage

Storage:

Store at -20°C. Stable for one year after shipment.

Storage Buffer:

PBS with 0.02% sodium azide and 50% glycerol, pH7.3

Aliquoting is unnecessary for -20°C storage

*** 20ul sizes contain 0.1% BSA

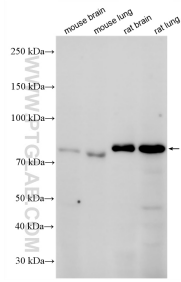
For technical support and original validation data for this product please contact:

T: 1 (888) 4PTGLAB (1-888-478-4522) (toll free in USA), or 1(312) 455-8498 (outside USA)

E: proteintech@ptglab.com
W: ptglab.com

This product is exclusively available under Proteintech Group brand and is not available to purchase from any other manufacturer.

Selected Validation Data



Various lysates were subjected to SDS PAGE followed by western blot with 33824-1-AP (MECP2 antibody) at dilution of 1:8000 incubated at room temperature for 1.5 hours.