

For Research Use Only

WDR12 Polyclonal antibody

Catalog Number: 33831-1-AP



Basic Information

Catalog Number:

33831-1-AP

Size:

150ul , Concentration: 300 ug/ml by Nanodrop;

Source:

Rabbit

Isotype:

IgG

Immunogen Catalog Number:

AG38016

GenBank Accession Number:

BC008082

GeneID (NCBI):

55759

UNIPROT ID:

Q9GZL7

Full Name:

WD repeat domain 12

Calculated MW:

423 aa, 48 kDa

Observed MW:

47 kDa

Purification Method:

Antigen affinity Purification

Recommended Dilutions:

WB: 1:1000-1:4000

Applications

Tested Applications:

WB, ELISA

Species Specificity:

human

Positive Controls:

WB : HeLa cells,

Background Information

WDR12 is a nucleolar WD-repeat scaffolding protein and an essential component of the PeBoW complex required for 60S ribosomal subunit maturation. By driving pre-rRNA processing, WDR12 supports cell growth and proliferation, while its disruption activates the p53-dependent nucleolar stress pathway. Upregulated in multiple cancers and genetically linked to cardiometabolic traits, WDR12 serves as a central regulator of ribosome biogenesis, cell-cycle control, and cellular homeostasis.

Storage

Storage:

Store at -20°C. Stable for one year after shipment.

Storage Buffer:

PBS with 0.02% sodium azide and 50% glycerol, pH7.3

Aliquoting is unnecessary for -20°C storage

***** 20ul sizes contain 0.1%BSA**

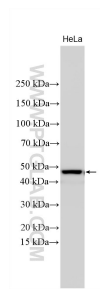
For technical support and original validation data for this product please contact:

T: 1 (888) 4PTGLAB (1-888-478-4522) (toll free in USA), or 1(312) 455-8498 (outside USA)

E: proteintech@ptglab.com
W: ptglab.com

This product is exclusively available under Proteintech Group brand and is not available to purchase from any other manufacturer.

Selected Validation Data



HeLa cells lysates were subjected to SDS PAGE followed by western blot with 33831-1-AP (WDR12 antibody) at dilution of 1:2000 incubated at room temperature for 1.5 hours.