

For Research Use Only

# RAP2C Polyclonal antibody

Catalog Number: 33845-1-AP



## Basic Information

**Catalog Number:**

33845-1-AP

**Size:**

150ul , Concentration: 400 ug/ml by Nanodrop;

**Source:**

Rabbit

**Isotype:**

IgG

**Immunogen Catalog Number:**

AG38723

**GenBank Accession Number:**

BC003403

**GeneID (NCBI):**

57826

**UNIPROT ID:**

Q9Y3L5

**Full Name:**

RAP2C, member of RAS oncogene family

**Calculated MW:**

20 kDa

**Observed MW:**

20 kDa

**Purification Method:**

Antigen affinity Purification

**Recommended Dilutions:**

WB: 1:1000-1:4000

## Applications

**Tested Applications:**

WB, ELISA

**Species Specificity:**

human

**Positive Controls:**

WB : HCT 116 cells, HeLa cells, MCF-7 cells, SW480 cells

## Background Information

RAP2C is a member of the Ras superfamily, which is the promoter of tumorigenesis. RAP2C plays a key role in the migration and invasion of various tumors, such as osteosarcoma, glioma, and small cell lung cancer (SCLC). (PMID: 29552178; PMID: 32341653; PMID: 33302819)

## Storage

**Storage:**

Store at -20°C. Stable for one year after shipment.

**Storage Buffer:**

PBS with 0.02% sodium azide and 50% glycerol, pH7.3

Aliquoting is unnecessary for -20°C storage

\*\*\* 20ul sizes contain 0.1% BSA

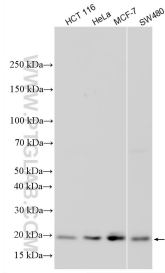
For technical support and original validation data for this product please contact:

T: 1 (888) 4PTGLAB (1-888-478-4522) (toll free in USA), or 1(312) 455-8498 (outside USA)

E: [proteintech@ptglab.com](mailto:proteintech@ptglab.com)  
W: [ptglab.com](http://ptglab.com)

This product is exclusively available under Proteintech Group brand and is not available to purchase from any other manufacturer.

## Selected Validation Data



Various lysates were subjected to SDS PAGE followed by western blot with 33845-1-AP (RAP2C antibody) at dilution of 1:2000 incubated at room temperature for 1.5 hours.