

For Research Use Only

RAP2C Polyclonal antibody, PBS Only

Catalog Number: 33845-1-PBS



Basic Information

Catalog Number:

33845-1-PBS

Size:

100ug, Concentration: 1 mg/ml by Nanodrop;

Source:

Rabbit

Isotype:

IgG

Immunogen Catalog Number:

AG38723

GenBank Accession Number:

BC003403

GeneID (NCBI):

57826

UNIPROT ID:

Q9Y3L5

Full Name:

RAP2C, member of RAS oncogene family

Calculated MW:

20 kDa

Observed MW:

20 kDa

Purification Method:

Antigen affinity Purification

Applications

Tested Applications:

WB, Indirect ELISA

Species Specificity:

human

Background Information

RAP2C is a member of the Ras superfamily, which is the promoter of tumorigenesis. RAP2C plays a key role in the migration and invasion of various tumors, such as osteosarcoma, glioma, and small cell lung cancer (SCLC). (PMID: 29552178; PMID: 32341653; PMID: 33302819)

Storage

Storage:

Store at -80°C.

Storage Buffer:

PBS only, pH7.3

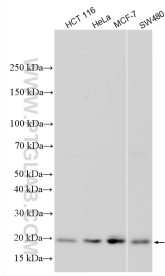
For technical support and original validation data for this product please contact:

T: 1 (888) 4PTGLAB (1-888-478-4522) (toll free in USA), or 1(312) 455-8498 (outside USA)

E: proteintech@ptglab.com
W: ptglab.com

This product is exclusively available under Proteintech Group brand and is not available to purchase from any other manufacturer.

Selected Validation Data



Various lysates were subjected to SDS PAGE followed by western blot with 33845-1-AP (RAP2C antibody) at dilution of 1:2000 incubated at room temperature for 1.5 hours. This data was developed using the same antibody clone with 33845-1-PBS in a different storage buffer formulation.