

For Research Use Only

REG3G Polyclonal antibody

Catalog Number:33895-1-AP



Basic Information

Catalog Number: 33895-1-AP	GenBank Accession Number: BC103854	Purification Method: Antigen affinity Purification
Size: 150ul , Concentration: 380 ug/ml by Nanodrop;	GeneID (NCBI): 130120	Recommended Dilutions: WB: 1:500-1:2000
Source: Rabbit	UNIPROT ID: Q6UW15	
Isotype: IgG	Full Name: regenerating islet-derived 3 gamma	
Immunogen Catalog Number: AG35686	Calculated MW: 19 kDa	
	Observed MW: 18 kDa	

Applications

Tested Applications: WB, ELISA	Positive Controls: WB : mouse pancreas tissue,
Species Specificity: human, mouse	

Background Information

REG3G (Regenerating Islet-Derived 3 Gamma) is a small intestinal C-type lectin-like antimicrobial peptide mainly secreted by Paneth cells. First identified in regenerating pancreas, it is now recognized as a key defender of the gut barrier: it kills Gram-positive bacteria, limits bacterial contact with the epithelium, and thus helps prevent systemic inflammation and metabolic disease. Beyond its antimicrobial role, REG3G acts as a gut-derived hormone that links the intestinal microbiome to host metabolism. Its expression is boosted by dietary fiber, beneficial bacteria, interleukin-22 (IL-22) and bariatric surgery, and it reciprocally improves glucose control, reduces hepatic steatosis, accelerates wound healing and protects pancreatic β -cells by activating the JAK2/STAT3 pathway. Conversely, chronic alcohol intake or dysbiosis lowers REG3G levels, weakening the gut barrier and promoting alcoholic liver disease.

Storage

Storage:
Store at -20°C. Stable for one year after shipment.
Storage Buffer:
PBS with 0.02% sodium azide and 50% glycerol, pH7.3
Aliquoting is unnecessary for -20°C storage

*** 20ul sizes contain 0.1% BSA

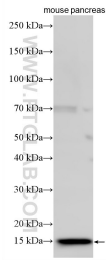
For technical support and original validation data for this product please contact:

T: 1 (888) 4PTGLAB (1-888-478-4522) (toll free in USA), or 1(312) 455-8498 (outside USA)

E: proteintech@ptglab.com
W: ptglab.com

This product is exclusively available under Proteintech Group brand and is not available to purchase from any other manufacturer.

Selected Validation Data



Various lysates were subjected to SDS PAGE followed by western blot with 33895-1-AP (REG3G antibody) at dilution of 1:1000 incubated at room temperature for 1.5 hours.